

## Product datasheet for **TA335945**

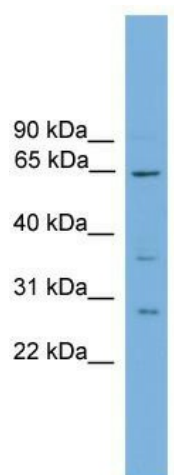
### CLCC1 Rabbit Polyclonal Antibody

#### Product data:

Product Type:	Primary Antibodies
Applications:	WB
Recommended Dilution:	WB
Reactivity:	Human
Host:	Rabbit
Isotype:	IgG
Clonality:	Polyclonal
Immunogen:	The immunogen for Anti-CLCC1 Antibody: synthetic peptide directed towards the N terminal of human CLCC1. Synthetic peptide located within the following region: LDSLTYKIDECEKKKREDYESQSNPVFRRYLNKILIEAGKLGLPDENKGD
Formulation:	Liquid. Purified antibody supplied in 1x PBS buffer with 0.09% (w/v) sodium azide and 2% sucrose. <i>Note that this product is shipped as lyophilized powder to China customers.</i>
Purification:	Affinity Purified
Conjugation:	Unconjugated
Storage:	Store at -20°C as received.
Stability:	Stable for 12 months from date of receipt.
Predicted Protein Size:	62 kDa
Gene Name:	chloride channel CLIC like 1
Database Link:	<a href="#">NP_001041675</a> <a href="#">Entrez Gene 23155 Human Q96S66</a>
Background:	CLCC1 seems to act as a chloride ion channel.
Synonyms:	MCLC
Note:	Immunogen Sequence Homology: Dog: 100%; Pig: 100%; Rat: 100%; Horse: 100%; Human: 100%; Mouse: 100%; Bovine: 100%; Rabbit: 100%; Guinea pig: 100%
Protein Families:	Ion Channels: Other, Transmembrane



[View online »](#)

**Product images:**

WB Suggested Anti-CLCC1 Antibody Titration: 0.2-1 ug/ml; ELISA Titer: 1: 62500; Positive Control: 721\_B cell lysate; CLCC1 is strongly supported by BioGPS gene expression data to be expressed in Human 721\_B cells