

## Product datasheet for **TA335943**

### Signal peptide peptidase like 2B (SPPL2B) Rabbit Polyclonal Antibody

#### Product data:

Product Type:	Primary Antibodies
Applications:	IHC, WB
Recommended Dilution:	WB, IHC
Reactivity:	Human
Host:	Rabbit
Isotype:	IgG
Clonality:	Polyclonal
Immunogen:	The immunogen for Anti-SPPL2B Antibody: synthetic peptide directed towards the N terminal of human SPPL2B. Synthetic peptide located within the following region: VARGNCTFYEKVRLAQGSGARGLLIVSRERLVPPGGNKTQYDEIGIPVAL
Formulation:	Liquid. Purified antibody supplied in 1x PBS buffer with 0.09% (w/v) sodium azide and 2% sucrose. <i>Note that this product is shipped as lyophilized powder to China customers.</i>
Purification:	Affinity Purified
Conjugation:	Unconjugated
Storage:	Store at -20°C as received.
Stability:	Stable for 12 months from date of receipt.
Predicted Protein Size:	56 kDa
Gene Name:	signal peptide peptidase like 2B
Database Link:	<a href="#">NP_001070706</a> <a href="#">Entrez Gene 56928 Human</a> <a href="#">Q8TCT7</a>
Background:	SPPL2B is a member of the GXGD family of aspartic proteases. The GXGD proteases are transmembrane proteins with two conserved catalytic motifs localized within the membrane-spanning regions. This enzyme localizes to endosomes, lysosomes, and the plasma membrane. It cleaves the transmembrane domain of tumor necrosis factor alpha to release the intracellular domain, which triggers cytokine expression in the innate and adaptive immunity pathways.



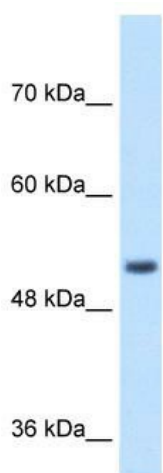
[View online »](#)

**Synonyms:** IMP-4; IMP4; PSH4; PSL1

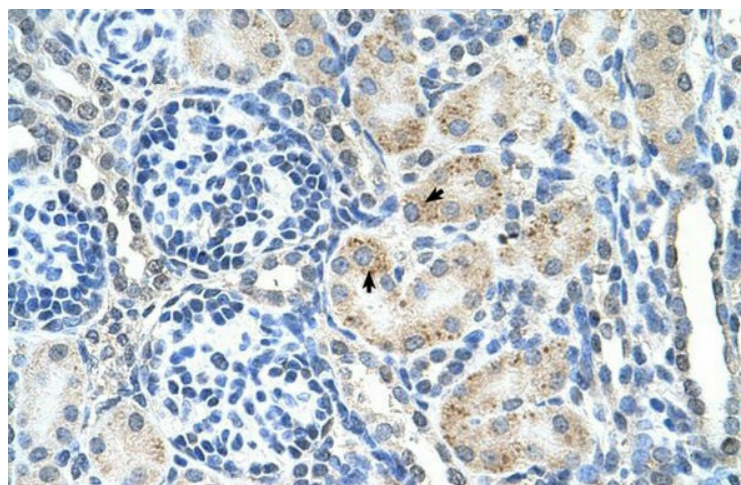
**Note:** Immunogen Sequence Homology: Human: 100%; Dog: 86%; Pig: 86%; Rat: 86%; Horse: 86%; Mouse: 86%; Bovine: 86%; Guinea pig: 79%

**Protein Families:** Protease, Transmembrane

**Product images:**



WB Suggested Anti-SPPL2B Antibody Titration: 1 ug/ml; Positive Control: Jurkat cell lysate; SPPL2B is supported by BioGPS gene expression data to be expressed in Jurkat



Human kidney