

Product datasheet for **TA335941**

CRELD1 Rabbit Polyclonal Antibody

Product data:

Product Type:	Primary Antibodies
Applications:	IHC, WB
Recommended Dilution:	WB, IHC
Reactivity:	Human
Host:	Rabbit
Isotype:	IgG
Clonality:	Polyclonal
Immunogen:	The immunogen for Anti-CRELD1 Antibody: synthetic peptide directed towards the C terminal of human CRELD1. Synthetic peptide located within the following region: TEVCPGENKQCENTEGGYRCICAEGYKQMEGICVKEQIPESAGFFSEMTE
Formulation:	Liquid. Purified antibody supplied in 1x PBS buffer with 0.09% (w/v) sodium azide and 2% sucrose. <i>Note that this product is shipped as lyophilized powder to China customers.</i>
Purification:	Protein A purified
Conjugation:	Unconjugated
Storage:	Store at -20°C as received.
Stability:	Stable for 12 months from date of receipt.
Predicted Protein Size:	45 kDa
Gene Name:	cysteine rich with EGF like domains 1
Database Link:	NP_001070883 Entrez Gene 78987 Human Q96HD1
Background:	Epidermal growth factor (EGF; MIM 131530)-like repeats are a class of cysteine-rich domains that mediate interactions between proteins of diverse function. EGF domains are found in proteins that are either completely secreted or have transmembrane regions that tether the protein to the cell surface. CRELD1 is the founding member of a family of matricellular proteins.
Synonyms:	AVSD2; CIRPIN

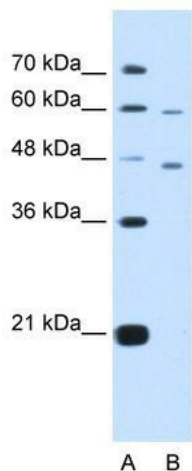


[View online »](#)

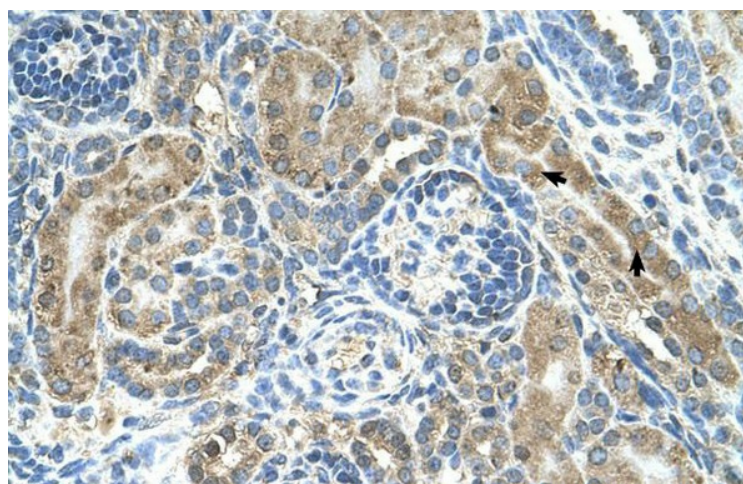
Note: Immunogen Sequence Homology: Dog: 100%; Pig: 100%; Horse: 100%; Human: 100%; Bovine: 100%; Guinea pig: 100%; Rat: 93%; Mouse: 86%

Protein Families: Transmembrane

Product images:



WB Suggested Anti-CRELD1 Antibody Titration: 5.0 ug/ml; Positive Control: HepG2 cell lysate



Human kidney