

Product datasheet for **TA335940**

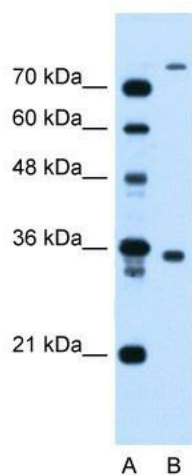
TMEM231 Rabbit Polyclonal Antibody

Product data:

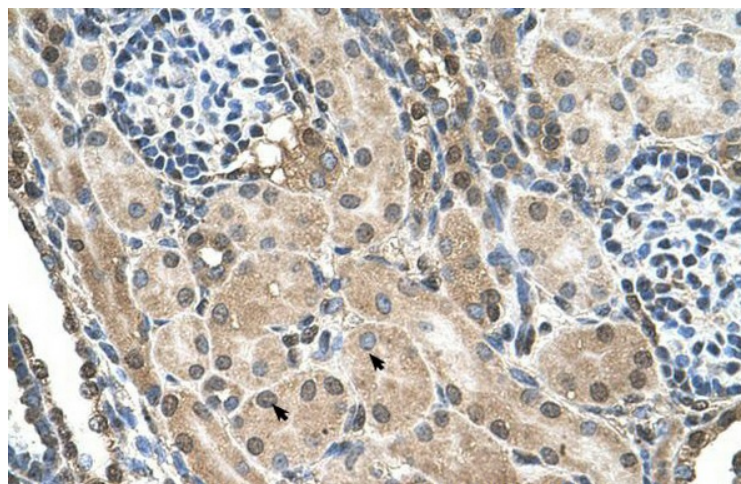
Product Type:	Primary Antibodies
Applications:	IHC, WB
Recommended Dilution:	WB, IHC
Reactivity:	Human
Host:	Rabbit
Isotype:	IgG
Clonality:	Polyclonal
Immunogen:	The immunogen for Anti-FLJ22167 Antibody: synthetic peptide directed towards the N terminal of human FLJ22167. Synthetic peptide located within the following region: CHEAPRARSARAGLPNRLPTALFNSGFWLKRSSYEEQPTVRFQHQVLLVA
Formulation:	Liquid. Purified antibody supplied in 1x PBS buffer with 0.09% (w/v) sodium azide and 2% sucrose.
Purification:	Protein A purified
Conjugation:	Unconjugated
Storage:	Store at -20°C as received.
Stability:	Stable for 12 months from date of receipt.
Predicted Protein Size:	36 kDa
Gene Name:	transmembrane protein 231
Database Link:	NP_001070886 Entrez Gene 79583 Human Q9H6L2
Background:	The function remains unknown.
Synonyms:	ALYE870; JBTS20; MKS11; PRO1886
Note:	Immunogen Sequence Homology: Dog: 100%; Pig: 100%; Rat: 100%; Human: 100%; Bovine: 100%; Rabbit: 100%; Guinea pig: 100%; Horse: 93%; Mouse: 93%; Zebrafish: 79%
Protein Families:	Transmembrane


[View online »](#)

Product images:



WB Suggested Anti-FLJ22167 Antibody Titration:
1.25 ug/ml; Positive Control: HepG2 cell lysate



Human kidney