

Product datasheet for **TA335939**

Kallikrein 5 (KLK5) Rabbit Polyclonal Antibody

Product data:

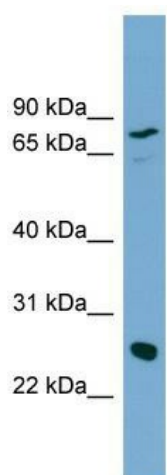
Product Type:	Primary Antibodies
Applications:	WB
Recommended Dilution:	WB
Reactivity:	Human
Host:	Rabbit
Isotype:	IgG
Clonality:	Polyclonal
Immunogen:	The immunogen for Anti-KLK5 Antibody: synthetic peptide directed towards the N terminal of human KLK5. Synthetic peptide located within the following region: CDHPSNTVPSGSNQLGAGAGEDARSDDSSSRIINGSDCDMHTQPWQAAL
Formulation:	Liquid. Purified antibody supplied in 1x PBS buffer with 0.09% (w/v) sodium azide and 2% sucrose. <i>Note that this product is shipped as lyophilized powder to China customers.</i>
Purification:	Affinity Purified
Conjugation:	Unconjugated
Storage:	Store at -20°C as received.
Stability:	Stable for 12 months from date of receipt.
Predicted Protein Size:	25 kDa
Gene Name:	kallikrein related peptidase 5
Database Link:	NP_001070959 Entrez Gene 25818 Human Q9Y337
Background:	Kallikreins are a subgroup of serine proteases having diverse physiological functions. Growing evidence suggests that many kallikreins are implicated in carcinogenesis and some have potential as novel cancer and other disease biomarkers. This gene is one
Synonyms:	KLK-L2; KLKL2; SCTE
Note:	Immunogen Sequence Homology: Human: 100%



[View online »](#)

Protein Families: Druggable Genome, Protease, Secreted Protein, Transmembrane

Product images:



WB Suggested Anti-KLK5 Antibody Titration: 0.2-1 ug/ml; ELISA Titer: 1: 312500; Positive Control: THP-1 cell lysate