

Product datasheet for **TA335938**

FAM55D (NXPE4) Rabbit Polyclonal Antibody

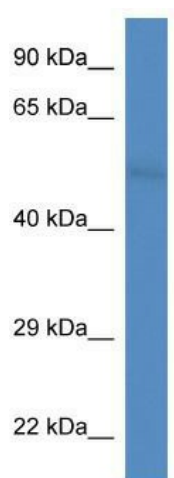
Product data:

Product Type:	Primary Antibodies
Applications:	WB
Recommended Dilution:	WB
Reactivity:	Mouse
Host:	Rabbit
Isotype:	IgG
Clonality:	Polyclonal
Immunogen:	The immunogen for Anti-Fam55d Antibody: synthetic peptide corresponding to a region of Mouse. Synthetic peptide located within the following region: NSDVERFSDFHGYTQYLALKDIFQDLNVGVIDAWDMTVAYGINNVHPPED
Formulation:	Liquid. Purified antibody supplied in 1x PBS buffer with 0.09% (w/v) sodium azide and 2% sucrose. <i>Note that this product is shipped as lyophilized powder to China customers.</i>
Purification:	Affinity Purified
Conjugation:	Unconjugated
Storage:	Store at -20°C as received.
Stability:	Stable for 12 months from date of receipt.
Predicted Protein Size:	61 kDa
Gene Name:	neurexophilin and PC-esterase domain family member 4
Database Link:	NP_001071107 Entrez Gene 244853 Mouse Q6UWF7
Background:	The function of this protein remains unknown.
Synonyms:	C11orf33; FAM55D
Note:	Immunogen Sequence Homology: Human: 100%; Pig: 93%; Rabbit: 93%; Rat: 92%; Horse: 92%; Bovine: 92%; Guinea pig: 92%; Dog: 85%; Mouse: 85%
Protein Families:	Secreted Protein, Transmembrane



[View online »](#)

Product images:



WB Suggested Anti-Fam55d Antibody; Titration:
1.0 ug/ml; Positive Control: Mouse Brain