

## Product datasheet for **TA335933**

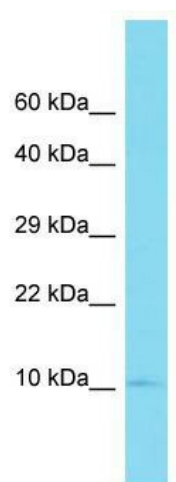
### FAM153CP Rabbit Polyclonal Antibody

#### Product data:

Product Type:	Primary Antibodies
Applications:	WB
Recommended Dilution:	WB
Reactivity:	Human
Host:	Rabbit
Isotype:	IgG
Clonality:	Polyclonal
Immunogen:	The immunogen for Anti-FAM153C Antibody is: synthetic peptide directed towards the C-terminal region of Human FAM153C. Synthetic peptide located within the following region: TGVHMMQVDPATPAKKLEDSTITGSHQQMSASPSSAPAEATEKTKVEEE
Formulation:	Liquid. Purified antibody supplied in 1x PBS buffer with 0.09% (w/v) sodium azide and 2% sucrose. <i>Note that this product is shipped as lyophilized powder to China customers.</i>
Purification:	Affinity Purified
Conjugation:	Unconjugated
Storage:	Store at -20°C as received.
Stability:	Stable for 12 months from date of receipt.
Predicted Protein Size:	12 kDa
Gene Name:	family with sequence similarity 153 member C
Database Link:	<a href="#">NP_001072995</a> <a href="#">Entrez Gene 653316 Human</a>
Background:	The function of this protein remains unknown.
Synonyms:	NY-REN-7-like
Note:	Immunogen Sequence Homology: Human: 100%



[View online »](#)

**Product images:**

Host: Rabbit; Target Name: FAM153C; Sample  
Tissue: Placenta lysates; Antibody Dilution: 1.0  
ug/ml