

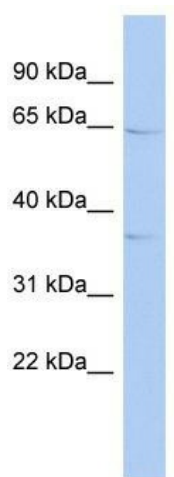
## Product datasheet for **TA335928**

### KIAA1191 Rabbit Polyclonal Antibody

#### Product data:

Product Type:	Primary Antibodies
Applications:	WB
Recommended Dilution:	WB
Reactivity:	Human
Host:	Rabbit
Isotype:	IgG
Clonality:	Polyclonal
Immunogen:	The immunogen for Anti-KIAA1191 Antibody: synthetic peptide directed towards the middle region of human KIAA1191. Synthetic peptide located within the following region: TKYLRVAEALHKLKLQSGEVTKEERQPASQAQSTPTTPHSSPKQRPRGWF
Formulation:	Liquid. Purified antibody supplied in 1x PBS buffer with 0.09% (w/v) sodium azide and 2% sucrose.
Purification:	Affinity Purified
Conjugation:	Unconjugated
Storage:	Store at -20°C as received.
Stability:	Stable for 12 months from date of receipt.
Predicted Protein Size:	33 kDa
Gene Name:	KIAA1191
Database Link:	<a href="#">NP_001073153</a> <a href="#">Entrez Gene 57179 Human</a> <a href="#">Q96A73</a>
Background:	The specific function of this protein remains unknown.
Synonyms:	p33MONOX; p60MONOX
Note:	Immunogen Sequence Homology: Human: 100%; Pig: 79%; Rat: 79%; Rabbit: 79%; Guinea pig: 79%


[View online »](#)

**Product images:**


WB Suggested Anti-KIAA1191 Antibody Titration:  
0.2-1 ug/ml; ELISA Titer: 1:62500; Positive Control:  
Human heart