

Product datasheet for TA335926

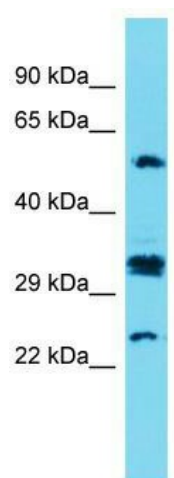
CT47A7 Rabbit Polyclonal Antibody

Product data:

Product Type:	Primary Antibodies
Applications:	WB
Recommended Dilution:	WB
Reactivity:	Human
Host:	Rabbit
Isotype:	IgG
Clonality:	Polyclonal
Immunogen:	The immunogen for Anti-CT47A7 Antibody is: synthetic peptide directed towards the C-terminal region of Human CT47A7. Synthetic peptide located within the following region: PDAAEPATEEPTAQEATAPEEVTKSQPEKWDEEAQDAAGEEEEKEQEKEKD
Formulation:	Liquid. Purified antibody supplied in 1x PBS buffer with 0.09% (w/v) sodium azide and 2% sucrose.
Purification:	Affinity Purified
Conjugation:	Unconjugated
Storage:	Store at -20°C as received.
Stability:	Stable for 12 months from date of receipt.
Predicted Protein Size:	29 kDa
Gene Name:	cancer/testis antigen family 47, member A7
Database Link:	NP_001073609 Entrez Gene 653282 Human Q5IQC4
Background:	This locus represents a member of the cancer/testis gene family 47. This family, also known as CT47, is comprised of 13 nearly identical loci clustered at Xq24.
Synonyms:	CT47.7
Note:	Immunogen Sequence Homology: Human: 100%



[View online »](#)

Product images:

Host: Rabbit; Target Name: CT47A7; Sample
Tissue: Fetal Kidney lysates; Antibody Dilution: 1.0
ug/ml