

Product datasheet for **TA335925**

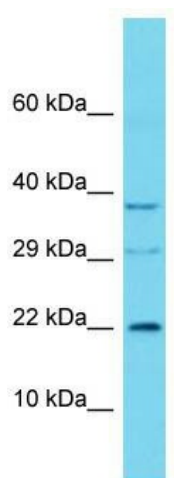
C16orf90 Rabbit Polyclonal Antibody

Product data:

| | |
|-------------------------|--|
| Product Type: | Primary Antibodies |
| Applications: | WB |
| Recommended Dilution: | WB |
| Reactivity: | Human |
| Host: | Rabbit |
| Isotype: | IgG |
| Clonality: | Polyclonal |
| Immunogen: | The immunogen for Anti-C16orf90 Antibody is: synthetic peptide directed towards the N-terminal region of Human C16orf90. Synthetic peptide located within the following region: APPNIYEGGLGSPQPQCPSAQGSKPKNFRLRHLRGLGLYLESHPPPTGQC |
| Formulation: | Liquid. Purified antibody supplied in 1x PBS buffer with 0.09% (w/v) sodium azide and 2% sucrose. <i>Note that this product is shipped as lyophilized powder to China customers.</i> |
| Purification: | Affinity Purified |
| Conjugation: | Unconjugated |
| Storage: | Store at -20°C as received. |
| Stability: | Stable for 12 months from date of receipt. |
| Predicted Protein Size: | 19 kDa |
| Gene Name: | chromosome 16 open reading frame 90 |
| Database Link: | NP_001073993 Entrez Gene 646174 Human A8MZG2 |
| Background: | The function of this protein remains unknown. |
| Synonyms: | C16orf90 |
| Note: | Immunogen Sequence Homology: Rat: 100%; Horse: 100%; Human: 100%; Mouse: 100%; Bovine: 100%; Dog: 93%; Pig: 93%; Rabbit: 93%; Guinea pig: 86% |



[View online »](#)

Product images:

Host: Rabbit; Target Name: C16orf90; Sample
Tissue: 721_B Whole Cell lysates; Antibody
Dilution: 1.0 ug/ml