

Product datasheet for **TA335918**

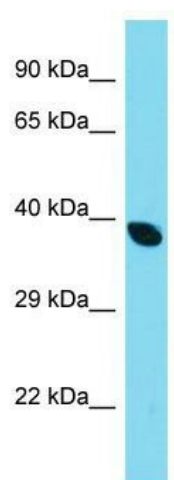
DCDC2B Rabbit Polyclonal Antibody

Product data:

Product Type:	Primary Antibodies
Applications:	WB
Recommended Dilution:	WB
Reactivity:	Human
Host:	Rabbit
Isotype:	IgG
Clonality:	Polyclonal
Immunogen:	The immunogen for Anti-DCDC2B Antibody is: synthetic peptide directed towards the C-terminal region of Human DCDC2B. Synthetic peptide located within the following region: ELLVPSPSLPRGCWQPPGSKSRPHRQGAQGHRAQVTQPSPKEPDRIKPSA
Formulation:	Liquid. Purified antibody supplied in 1x PBS buffer with 0.09% (w/v) sodium azide and 2% sucrose. <i>Note that this product is shipped as lyophilized powder to China customers.</i>
Purification:	Affinity Purified
Conjugation:	Unconjugated
Storage:	Store at -20°C as received.
Stability:	Stable for 12 months from date of receipt.
Predicted Protein Size:	37 kDa
Gene Name:	doublecortin domain containing 2B
Database Link:	NP_001092904 Entrez Gene 149069 Human A2VCK2
Background:	This gene encodes a member of the doublecortin family. The protein encoded by this gene contains two doublecortin domains. The doublecortin domain has been demonstrated to bind tubulin and enhance microtubule polymerization.
Synonyms:	DCDC2B
Note:	Immunogen Sequence Homology: Human: 100%; Bovine: 79%



[View online »](#)

Product images:

Host: Rabbit; Target Name: DCDC2B; Sample
Tissue: HepG2 Whole Cell lysates; Antibody
Dilution: 1.0 ug/ml