

## Product datasheet for **TA335917**

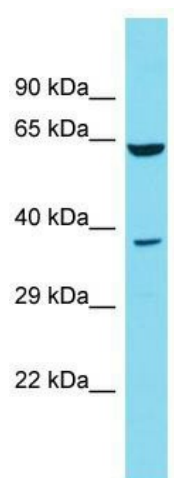
### DCDC2B Rabbit Polyclonal Antibody

#### Product data:

|                         |                                                                                                                                                                                                                                  |
|-------------------------|----------------------------------------------------------------------------------------------------------------------------------------------------------------------------------------------------------------------------------|
| Product Type:           | Primary Antibodies                                                                                                                                                                                                               |
| Applications:           | WB                                                                                                                                                                                                                               |
| Recommended Dilution:   | WB                                                                                                                                                                                                                               |
| Reactivity:             | Human                                                                                                                                                                                                                            |
| Host:                   | Rabbit                                                                                                                                                                                                                           |
| Isotype:                | IgG                                                                                                                                                                                                                              |
| Clonality:              | Polyclonal                                                                                                                                                                                                                       |
| Immunogen:              | The immunogen for Anti-DCDC2B Antibody is: synthetic peptide directed towards the N-terminal region of Human DCDC2B. Synthetic peptide located within the following region: RGQYVAAGFERFHKLHYLPHRGKDPGGKSCRLQGPPVTRHLCDGAIGRQL   |
| Formulation:            | Liquid. Purified antibody supplied in 1x PBS buffer with 0.09% (w/v) sodium azide and 2% sucrose.<br><i>Note that this product is shipped as lyophilized powder to China customers.</i>                                          |
| Purification:           | Affinity Purified                                                                                                                                                                                                                |
| Conjugation:            | Unconjugated                                                                                                                                                                                                                     |
| Storage:                | Store at -20°C as received.                                                                                                                                                                                                      |
| Stability:              | Stable for 12 months from date of receipt.                                                                                                                                                                                       |
| Predicted Protein Size: | 37 kDa                                                                                                                                                                                                                           |
| Gene Name:              | doublecortin domain containing 2B                                                                                                                                                                                                |
| Database Link:          | <a href="#">NP_001092904</a><br><a href="#">Entrez Gene 149069 Human</a><br><a href="#">A2VCK2</a>                                                                                                                               |
| Background:             | This gene encodes a member of the doublecortin family. The protein encoded by this gene contains two doublecortin domains. The doublecortin domain has been demonstrated to bind tubulin and enhance microtubule polymerization. |
| Synonyms:               | DCDC2B                                                                                                                                                                                                                           |
| Note:                   | Immunogen Sequence Homology: Human: 100%; Rat: 86%                                                                                                                                                                               |



[View online »](#)

**Product images:**

Host: Rabbit; Target Name: DCDC2B; Sample  
Tissue: HeLa Whole Cell lysates; Antibody Dilution:  
1.0 ug/ml