

Product datasheet for **TA335915**

SNRK Rabbit Polyclonal Antibody

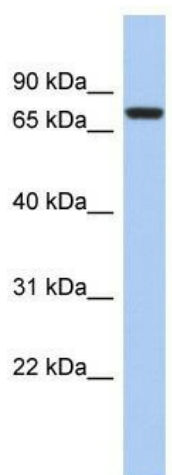
Product data:

Product Type:	Primary Antibodies
Applications:	WB
Recommended Dilution:	WB
Reactivity:	Human
Host:	Rabbit
Isotype:	IgG
Clonality:	Polyclonal
Immunogen:	The immunogen for Anti-SNRK Antibody: synthetic peptide directed towards the middle region of human SNRK. Synthetic peptide located within the following region: SSSETSDDDSESRRLDKDSGFTYSWHRRDSSEGPPGSEGDDGGGQSKPSN
Formulation:	Liquid. Purified antibody supplied in 1x PBS buffer with 0.09% (w/v) sodium azide and 2% sucrose.
Purification:	Affinity Purified
Conjugation:	Unconjugated
Storage:	Store at -20°C as received.
Stability:	Stable for 12 months from date of receipt.
Predicted Protein Size:	84 kDa
Gene Name:	SNF related kinase
Database Link:	NP_001094064 Entrez Gene 54861 Human Q9NRH2
Background:	SNRK may play a role in hematopoietic cell proliferation or differentiation. SNRK is the potential mediator of neuronal apoptosis.
Synonyms:	HSNFRK
Note:	Immunogen Sequence Homology: Pig: 100%; Rat: 100%; Human: 100%; Mouse: 100%; Bovine: 100%; Rabbit: 100%; Guinea pig: 100%; Dog: 92%
Protein Families:	Druggable Genome, Protein Kinase



[View online »](#)

Product images:



WB Suggested Anti-SNRK Antibody Titration: 0.2-1 ug/ml; ELISA Titer: 1:312500; Positive Control: Human heart