

## Product datasheet for **TA335914**

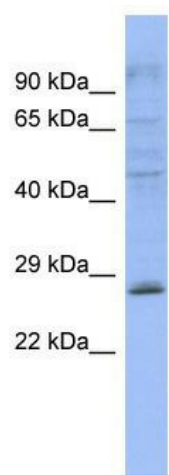
### PLEKHB2 Rabbit Polyclonal Antibody

#### Product data:

Product Type:	Primary Antibodies
Applications:	WB
Recommended Dilution:	WB
Reactivity:	Human
Host:	Rabbit
Isotype:	IgG
Clonality:	Polyclonal
Immunogen:	The immunogen for Anti-PLEKHB2 Antibody: synthetic peptide directed towards the middle region of human PLEKHB2. Synthetic peptide located within the following region: AYGYGPYGGAYPPGTQVVYAANGQAYAVPYQYPYAGLYGQQPANQVIIRE
Formulation:	Liquid. Purified antibody supplied in 1x PBS buffer with 0.09% (w/v) sodium azide and 2% sucrose. <i>Note that this product is shipped as lyophilized powder to China customers.</i>
Purification:	Affinity Purified
Conjugation:	Unconjugated
Storage:	Store at -20°C as received.
Stability:	Stable for 12 months from date of receipt.
Predicted Protein Size:	25 kDa
Gene Name:	pleckstrin homology domain containing B2
Database Link:	<a href="#">NP_001094093</a> <a href="#">Entrez Gene 55041 Human</a> <a href="#">Q96CS7</a>
Background:	The function of the PLEKHB2 gene has not yet been determined.
Synonyms:	EVT2
Note:	Immunogen Sequence Homology: Human: 100%; Pig: 93%; Bovine: 93%; Dog: 86%; Rat: 86%; Horse: 86%; Mouse: 86%; Rabbit: 86%; Guinea pig: 86%; Zebrafish: 75%



[View online »](#)

**Product images:**

WB Suggested Anti-PLEKHB2 Antibody Titration: 0.2-1 ug/ml; ELISA Titer: 1:62500; Positive Control: COLO205 cell lysate. PLEKHB2 is strongly supported by BioGPS gene expression data to be expressed in Human COLO205 cells