

## Product datasheet for TA335912

### PSMA4 Rabbit Polyclonal Antibody

#### Product data:

Product Type:	Primary Antibodies
Applications:	WB
Recommended Dilution:	WB
Reactivity:	Human
Host:	Rabbit
Isotype:	IgG
Clonality:	Polyclonal
Immunogen:	The immunogen for Anti-PSMA4 Antibody: synthetic peptide directed towards the N terminal of human PSMA4. Synthetic peptide located within the following region: PCEQLVTALCDIKQAYTQFGGKRPFVGSLLYIGWDKHYGFQLYQSDPSGN
Formulation:	Liquid. Purified antibody supplied in 1x PBS buffer with 0.09% (w/v) sodium azide and 2% sucrose. <i>Note that this product is shipped as lyophilized powder to China customers.</i>
Purification:	Affinity Purified
Conjugation:	Unconjugated
Storage:	Store at -20°C as received.
Stability:	Stable for 12 months from date of receipt.
Predicted Protein Size:	21 kDa
Gene Name:	proteasome subunit alpha 4
Database Link:	<a href="#">NP_001096138</a> <a href="#">Entrez Gene 5685 Human P25789</a>
Background:	The proteasome is a multicatalytic proteinase complex with a highly ordered ring-shaped 20S core structure. The core structure is composed of 4 rings of 28 non-identical subunits; 2 rings are composed of 7 alpha subunits and 2 rings are composed of 7 beta
Synonyms:	HC9; HsT17706; PSC9
Note:	Immunogen Sequence Homology: Pig: 100%; Rat: 100%; Horse: 100%; Human: 100%; Mouse: 100%; Bovine: 100%; Rabbit: 100%; Zebrafish: 100%; Guinea pig: 100%

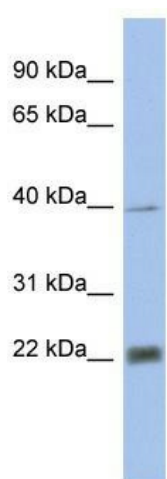


[View online »](#)

Protein Families: Druggable Genome, Protease

Protein Pathways: Proteasome

### Product images:



WB Suggested Anti-PSMA4 Antibody Titration:  
0.2-1 ug/ml; ELISA Titer: 1:312500; Positive  
Control: Human heart