

Product datasheet for **TA335910**

FAM183B (FAM183BP) Rabbit Polyclonal Antibody

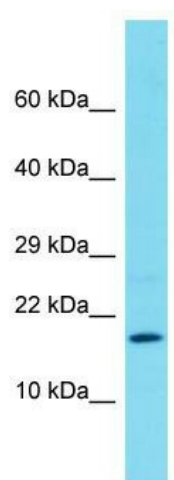
Product data:

| | |
|--------------------------------|---|
| Product Type: | Primary Antibodies |
| Applications: | WB |
| Recommended Dilution: | WB |
| Reactivity: | Human |
| Host: | Rabbit |
| Isotype: | IgG |
| Clonality: | Polyclonal |
| Immunogen: | The immunogen for Anti-FAM183B Antibody is: synthetic peptide directed towards the C-terminal region of Human FAM183B. Synthetic peptide located within the following region: QTENQEIGWDSEALVDPERRDHRMNHFRVYSIDITLYKAKMWSLGEDDRHK |
| Formulation: | Liquid. Purified antibody supplied in 1x PBS buffer with 0.09% (w/v) sodium azide and 2% sucrose. <i>Note that this product is shipped as lyophilized powder to China customers.</i> |
| Purification: | Affinity Purified |
| Conjugation: | Unconjugated |
| Storage: | Store at -20°C as received. |
| Stability: | Stable for 12 months from date of receipt. |
| Predicted Protein Size: | 14 kDa |
| Gene Name: | family with sequence similarity 183 member B, pseudogene |
| Database Link: | NP_001098752 Entrez Gene 340286 Human |
| Background: | The function of this protein remains unknown. |
| Note: | Immunogen Sequence Homology: Horse: 100%; Human: 100%; Bovine: 100%; Pig: 93%; Dog: 92%; Rabbit: 92%; Rat: 79%; Mouse: 79%; Guinea pig: 79% |



[View online »](#)

Product images:



Host: Rabbit; Target Name: FAM183B; Sample
Tissue: Placenta lysates; Antibody Dilution: 1.0
ug/ml