

## Product datasheet for **TA335909**

### DHRS7C Rabbit Polyclonal Antibody

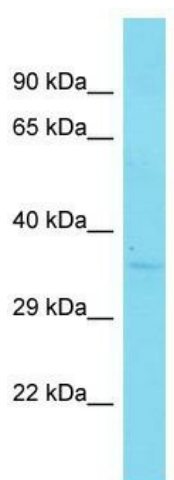
#### Product data:

Product Type:	Primary Antibodies
Applications:	WB
Recommended Dilution:	WB
Reactivity:	Human
Host:	Rabbit
Isotype:	IgG
Clonality:	Polyclonal
Immunogen:	The immunogen for Anti-DHRS7C Antibody is: synthetic peptide directed towards the C-terminal region of Human DHRS7C. Synthetic peptide located within the following region: HVYPEQGNWEASIWKFFFRKLTYGVHPVEVAEEVMRTVRRKKQEVFMANP
Formulation:	Liquid. Purified antibody supplied in 1x PBS buffer with 0.09% (w/v) sodium azide and 2% sucrose.
Purification:	Affinity Purified
Conjugation:	Unconjugated
Storage:	Store at -20°C as received.
Stability:	Stable for 12 months from date of receipt.
Predicted Protein Size:	35 kDa
Gene Name:	dehydrogenase/reductase 7C
Database Link:	<a href="#">NP_001099041</a> <a href="#">Entrez Gene 201140 Human</a> <a href="#">A6NNS2</a>
Background:	DHRS7C is a putative oxidoreductase.
Synonyms:	SDR32C2
Note:	Immunogen Sequence Homology: Dog: 100%; Pig: 100%; Rat: 100%; Horse: 100%; Human: 100%; Mouse: 100%; Bovine: 100%; Rabbit: 100%
Protein Families:	Druggable Genome, Transmembrane



[View online »](#)

## Product images:



Host: Rabbit; Target Name: DHRS7C; Sample  
Tissue: Placenta lysates; Antibody Dilution: 1.0  
ug/ml