

Product datasheet for **TA335907**

TBC1D14 Rabbit Polyclonal Antibody

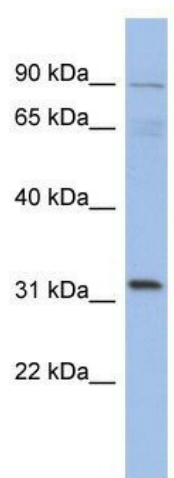
Product data:

Product Type:	Primary Antibodies
Applications:	WB
Recommended Dilution:	WB
Reactivity:	Human
Host:	Rabbit
Isotype:	IgG
Clonality:	Polyclonal
Immunogen:	The immunogen for Anti-TBC1D14 Antibody: synthetic peptide directed towards the N terminal of human TBC1D14. Synthetic peptide located within the following region: MTDGKLSTSTNGVAFMGILDGRPGNPLQNLQHVNLKAPRLLSAPEYGPKL
Formulation:	Liquid. Purified antibody supplied in 1x PBS buffer with 0.09% (w/v) sodium azide and 2% sucrose. <i>Note that this product is shipped as lyophilized powder to China customers.</i>
Purification:	Affinity Purified
Conjugation:	Unconjugated
Storage:	Store at -20°C as received.
Stability:	Stable for 12 months from date of receipt.
Predicted Protein Size:	76 kDa
Gene Name:	TBC1 domain family member 14
Database Link:	NP_001106832 Entrez Gene 57533 Human Q9P2M4
Background:	TBC1D14 may act as a GTPase-activating protein for Rab family protein(s).
Synonyms:	FLJ32400; KIAA1322
Note:	Immunogen Sequence Homology: Human: 100%; Horse: 92%; Bovine: 92%; Dog: 85%; Pig: 85%; Rat: 85%; Mouse: 85%



[View online »](#)

Product images:



WB Suggested Anti-TBC1D14 Antibody Titration:
0.2-1 ug/ml; ELISA Titer: 1:62500; Positive Control:
721_B cell lysate