

Product datasheet for TA335905

C4orf47 Rabbit Polyclonal Antibody

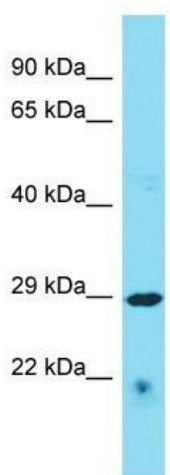
Product data:

Product Type:	Primary Antibodies
Applications:	WB
Recommended Dilution:	WB
Reactivity:	Human
Host:	Rabbit
Isotype:	IgG
Clonality:	Polyclonal
Immunogen:	The immunogen for Anti-C4orf47 Antibody is: synthetic peptide directed towards the C-terminal region of Human C4orf47. Synthetic peptide located within the following region: FDANPYFSEESLPPIKKEEKKTISNTFKPSSPGKKPGGMKAGTFDPYPS
Formulation:	Liquid. Purified antibody supplied in 1x PBS buffer with 0.09% (w/v) sodium azide and 2% sucrose. <i>Note that this product is shipped as lyophilized powder to China customers.</i>
Purification:	Affinity Purified
Conjugation:	Unconjugated
Storage:	Store at -20°C as received.
Stability:	Stable for 12 months from date of receipt.
Predicted Protein Size:	33 kDa
Gene Name:	chromosome 4 open reading frame 47
Database Link:	NP_001107829 Entrez Gene 441054 Human A7E2U8
Background:	The function of this protein remains unknown.
Synonyms:	C4orf47
Note:	Immunogen Sequence Homology: Human: 100%; Dog: 93%; Pig: 93%; Rat: 93%; Mouse: 93%; Bovine: 93%; Rabbit: 93%; Guinea pig: 93%; Horse: 86%; Zebrafish: 86%



[View online »](#)

Product images:



Host: Rabbit
Target Name: C4orf47
Sample Tissue: HepG2 Cell Lysate
Antibody Dilution: 1.0 μ g/ml

Host: Rabbit; Target Name: C4orf47; Sample
Tissue: HepG2 Whole Cell lysates; Antibody
Dilution: 1.0 ug/ml