

Product datasheet for **TA335904**

ASPDH Rabbit Polyclonal Antibody

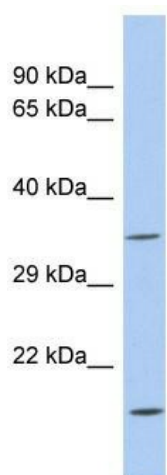
Product data:

Product Type:	Primary Antibodies
Applications:	WB
Recommended Dilution:	WB
Reactivity:	Human
Host:	Rabbit
Isotype:	IgG
Clonality:	Polyclonal
Immunogen:	The immunogen for Anti-ASPDH Antibody: synthetic peptide directed towards the middle region of human LOC554235. Synthetic peptide located within the following region: LRSLRVTMATHPDGFRLEGPLAAAHSPGPCTVLYEGPVRGLCPFAPRNSN
Formulation:	Liquid. Purified antibody supplied in 1x PBS buffer with 0.09% (w/v) sodium azide and 2% sucrose.
Purification:	Affinity Purified
Conjugation:	Unconjugated
Storage:	Store at -20°C as received.
Stability:	Stable for 12 months from date of receipt.
Predicted Protein Size:	31 kDa
Gene Name:	aspartate dehydrogenase domain containing
Database Link:	NP_001108070 Entrez Gene 554235 Human A6ND91
Background:	The specific function of this protein remains unknown.
Synonyms:	aspartate dehydrogenase; aspartate dehydrogenase domain containing
Note:	Immunogen Sequence Homology: Pig: 100%; Rat: 100%; Human: 100%; Mouse: 100%; Bovine: 100%; Guinea pig: 100%; Dog: 93%



[View online »](#)

Product images:



WB Suggested Anti-ASPDH Antibody Titration:
0.2-1 ug/ml; ELISA Titer: 1:312500; Positive
Control: Human Spleen