

Product datasheet for **TA335902**

FANCL Rabbit Polyclonal Antibody

Product data:

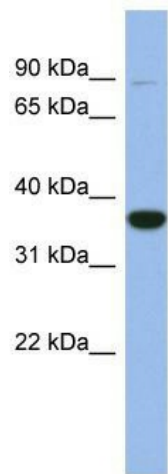
Product Type:	Primary Antibodies
Applications:	IHC, WB
Recommended Dilution:	WB
Reactivity:	Human
Host:	Rabbit
Isotype:	IgG
Clonality:	Polyclonal
Immunogen:	The immunogen for Anti-FANCL Antibody: synthetic peptide directed towards the middle region of human FANCL. Synthetic peptide located within the following region: ASGREHLITLKLKAKYPAESPDYFVDFPVPFCASWTPQVNSPQSSLISIIY
Formulation:	Liquid. Purified antibody supplied in 1x PBS buffer with 0.09% (w/v) sodium azide and 2% sucrose. <i>Note that this product is shipped as lyophilized powder to China customers.</i>
Purification:	Affinity Purified
Conjugation:	Unconjugated
Storage:	Store at -20°C as received.
Stability:	Stable for 12 months from date of receipt.
Predicted Protein Size:	42 kDa
Gene Name:	Fanconi anemia complementation group L
Database Link:	NP_001108108 Entrez Gene 55120 Human Q9NW38
Background:	The Fanconi anemia complementation group (FANCA) currently includes FANCA, FANCB, FANCC, FANCD1 (also called BRCA2), FANCD2, FANCE, FANCF, FANCG, FANCI, FANCI (also called BRIP1), FANCL, FANCM and FANCN (also called PALB2). The previously defined group FAN
Synonyms:	FAAP43; PHF9; POG
Note:	Immunogen Sequence Homology: Human: 100%; Dog: 93%; Rabbit: 86%



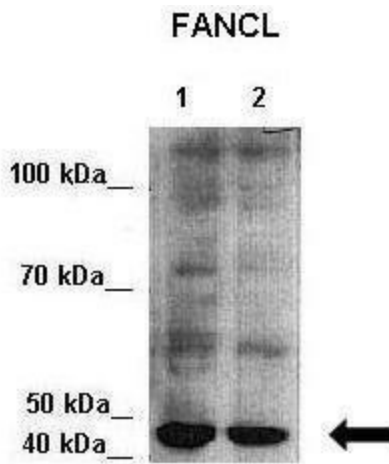
[View online »](#)

Protein Pathways: Ubiquitin mediated proteolysis

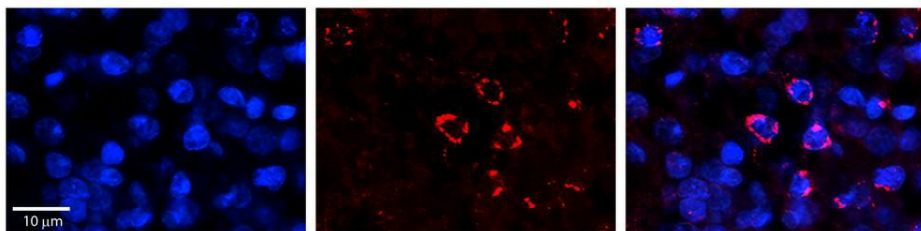
Product images:



WB Suggested Anti-FANCL Antibody Titration: 0.2-1 ug/ml; ELISA Titer: 1:62500; Positive Control: Human heart



Lanes: Lane 1: 7ug HEK293 cytoplasmic lysate; 2: 7ug HEK293 nuclei lysate; Primary Antibody Dilution: 1:1000; Secondary Antibody: Anti-rabbit-HRP; Secondary Antibody Dilution: ; 1:3000; Gene Name: ; FANCL; FANCL is supported by BioGPS gene expression data to be expressed in HEK293



Rabbit Anti-FANCL Antibody; Formalin Fixed Paraffin Embedded Tissue: Human Pineal Tissue; Observed Staining: Cytoplasmic and nuclear in in pinealocytes; Primary Antibody Concentration: 1:100; Secondary Antibody: Donkey anti-Rabbit-Cy3; Secondary Antibody Concentration: 1:200; Magnification: 20X; Exposure Time: 0.5-2.0 sec;