

Product datasheet for TA335900

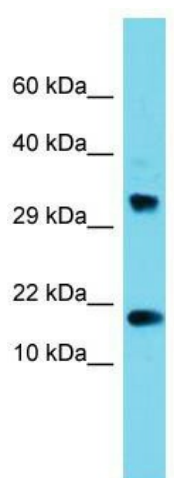
CPSF4L Rabbit Polyclonal Antibody

Product data:

Product Type:	Primary Antibodies
Applications:	WB
Recommended Dilution:	WB
Reactivity:	Human
Host:	Rabbit
Isotype:	IgG
Clonality:	Polyclonal
Immunogen:	The immunogen for Anti-CPSF4L Antibody is: synthetic peptide directed towards the N-terminal region of Human CPSF4L. Synthetic peptide located within the following region: EKDVEMQKGTGLLPFQGMDKSASAVCNFFTKGLCEKGLCPFRHDRGEKM
Formulation:	Liquid. Purified antibody supplied in 1x PBS buffer with 0.09% (w/v) sodium azide and 2% sucrose.
Purification:	Affinity Purified
Conjugation:	Unconjugated
Storage:	Store at -20°C as received.
Stability:	Stable for 12 months from date of receipt.
Predicted Protein Size:	20 kDa
Gene Name:	cleavage and polyadenylation specific factor 4-like
Database Link:	NP_001123357 Entrez Gene 642843 Human A6NMK7
Background:	The function of this protein remains unknown.
Synonyms:	0610010C04Rik; 1500000C01Rik; cleavage and polyadenylation specific factor 4-like; D11Erttd636e; OTTMUSP00000004107; OTTMUSP00000004108
Note:	Immunogen Sequence Homology: Human: 100%; Horse: 93%; Rabbit: 82%; Rat: 75%



[View online »](#)

Product images:

Host: Rabbit; Target Name: CPSF4L; Sample
Tissue: 293T Whole Cell lysates; Antibody
Dilution: 1.0 ug/ml