

Product datasheet for **TA335899**

CRISP1 Rabbit Polyclonal Antibody

Product data:

Product Type:	Primary Antibodies
Applications:	WB
Recommended Dilution:	WB
Reactivity:	Human
Host:	Rabbit
Isotype:	IgG
Clonality:	Polyclonal
Immunogen:	The immunogen for Anti-CRISP1 Antibody: synthetic peptide directed towards the N terminal of human CRISP1. Synthetic peptide located within the following region: LKMSWSEEAQNRIFSKYCDMTESNPLERRLPNTFCGENMHMTSYPVSW
Formulation:	Liquid. Purified antibody supplied in 1x PBS buffer with 0.09% (w/v) sodium azide and 2% sucrose. <i>Note that this product is shipped as lyophilized powder to China customers.</i>
Purification:	Affinity Purified
Conjugation:	Unconjugated
Storage:	Store at -20°C as received.
Stability:	Stable for 12 months from date of receipt.
Predicted Protein Size:	27 kDa
Gene Name:	cysteine rich secretory protein 1
Database Link:	NP_001122 Entrez Gene 167 Human P54107



[View online »](#)

Background:

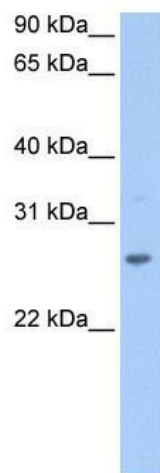
Fertilization consists of a sequence of specific cell-cell interactions culminating in the fusion of the sperm and egg plasma membranes. Recognition, binding, and fusion occur through the interaction of complementary molecules that are localized to specific domains of the sperm and egg plasma membranes. In the sperm, the postacrosomal region or equatorial segment is involved in sperm-egg plasma membrane fusion. CRISP1 is a member of the cysteine-rich secretory protein (CRISP) family. It is expressed in the epididymis, is secreted into the epididymal lumen, and binds to the postacrosomal region of the sperm head where it plays a role at fertilization in sperm-egg fusion through complementary sites localized on the egg surface. Fertilization consists of a sequence of specific cell-cell interactions culminating in the fusion of the sperm and egg plasma membranes. Recognition, binding, and fusion occur through the interaction of complementary molecules that are localized to specific domains of the sperm and egg plasma membranes. In the sperm, the postacrosomal region or equatorial segment is involved in sperm-egg plasma membrane fusion. The protein encoded by this gene is a member of the cysteine-rich secretory protein (CRISP) family. This protein is expressed in the epididymis, is secreted into the epididymal lumen, and binds to the postacrosomal region of the sperm head where it plays a role at fertilization in sperm-egg fusion through complementary sites localized on the egg surface. Two isoforms are encoded by transcript variants of this gene.

Synonyms:

AEGL1; ARP; CRISP-1; HEL-S-57; HSCRISP1D; HSCRISP1G; HUMARP

Note:

Immunogen Sequence Homology: Human: 100%; Zebrafish: 100%; Dog: 85%; Pig: 85%; Goat: 85%; Bovine: 85%; Rabbit: 79%

Product images:

WB Suggested Anti-CRISP1 Antibody Titration:
0.2-1 ug/ml; Positive Control: 721_B cell lysate