

## Product datasheet for **TA335898**

### CDKN1A interacting zinc finger protein 1 (CIZ1) Rabbit Polyclonal Antibody

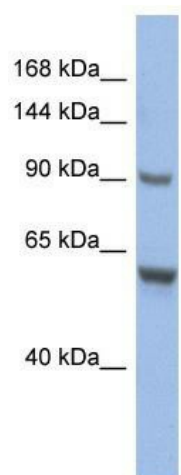
#### Product data:

Product Type:	Primary Antibodies
Applications:	WB
Recommended Dilution:	WB
Reactivity:	Human
Host:	Rabbit
Isotype:	IgG
Clonality:	Polyclonal
Immunogen:	The immunogen for Anti-CIZ1 Antibody: synthetic peptide directed towards the middle region of human CIZ1. Synthetic peptide located within the following region: YICRICHKFYHSNSGAQLSHCKSLGHFENLQKYKAAKNPSPTRPVSRR
Formulation:	Liquid. Purified antibody supplied in 1x PBS buffer with 0.09% (w/v) sodium azide and 2% sucrose. <i>Note that this product is shipped as lyophilized powder to China customers.</i>
Purification:	Affinity Purified
Conjugation:	Unconjugated
Storage:	Store at -20°C as received.
Stability:	Stable for 12 months from date of receipt.
Predicted Protein Size:	91 kDa
Gene Name:	CDKN1A interacting zinc finger protein 1
Database Link:	<a href="#">NP_001124490</a> <a href="#">Entrez Gene 25792 Human</a> <a href="#">Q9ULV3</a>
Background:	CIZ1 may regulate the subcellular localization of CIP/WAF1.
Synonyms:	LSFR1; NP94; ZNF356
Note:	Immunogen Sequence Homology: Pig: 100%; Human: 100%; Rabbit: 100%; Guinea pig: 100%; Dog: 92%; Rat: 92%; Horse: 92%; Mouse: 92%; Bovine: 92%



[View online »](#)

## Product images:



WB Suggested Anti-CIZ1 Antibody Titration: 0.2-1 ug/ml; ELISA Titer: 1:12500; Positive Control: HT1080 cell lysate; CIZ1 is supported by BioGPS gene expression data to be expressed in HT1080