

## Product datasheet for **TA335897**

### TMPPE Rabbit Polyclonal Antibody

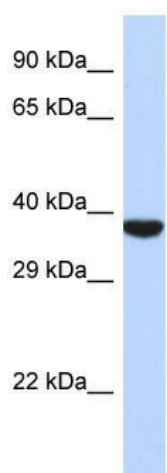
#### Product data:

Product Type:	Primary Antibodies
Applications:	WB
Recommended Dilution:	WB
Reactivity:	Human
Host:	Rabbit
Isotype:	IgG
Clonality:	Polyclonal
Immunogen:	The immunogen for Anti-TMPPE Antibody is: synthetic peptide directed towards the N-terminal region of Human TMPPE. Synthetic peptide located within the following region: TVGRTKMEMFVRMVNVLEPDITVIVGDLSDSEASVLRRTAVAPLGQLHSHL
Formulation:	Liquid. Purified antibody supplied in 1x PBS buffer with 0.09% (w/v) sodium azide and 2% sucrose.
Purification:	Affinity Purified
Conjugation:	Unconjugated
Storage:	Store at -20°C as received.
Stability:	Stable for 12 months from date of receipt.
Predicted Protein Size:	35 kDa
Gene Name:	transmembrane protein with metallophosphoesterase domain
Database Link:	<a href="#">NP_001129710</a> <a href="#">Entrez Gene 643853 Human</a> <a href="#">Q6ZT21</a>
Background:	The function of this protein remains unknown.
Synonyms:	FLJ45032; FLJ46376
Note:	Immunogen Sequence Homology: Pig: 100%; Rat: 100%; Human: 100%; Mouse: 100%; Guinea pig: 100%; Bovine: 93%
Protein Families:	Transmembrane



[View online »](#)

## Product images:



Host: Rabbit; Target Name: TMPPE; Sample  
Tissue: 721\_B Whole cell lysates; Antibody  
Dilution: 1.0 ug/ml