

Product datasheet for **TA335896**

DCAF8L2 Rabbit Polyclonal Antibody

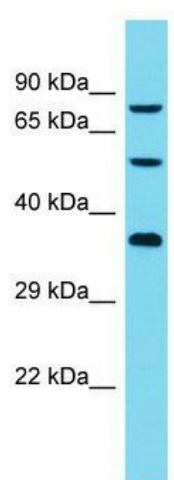
Product data:

Product Type:	Primary Antibodies
Applications:	WB
Recommended Dilution:	WB
Reactivity:	Human
Host:	Rabbit
Isotype:	IgG
Clonality:	Polyclonal
Immunogen:	The immunogen for Anti-DCAF8L2 Antibody is: synthetic peptide directed towards the C-terminal region of Human DCAF8L2. Synthetic peptide located within the following region: VKIWTPTAKAATELTGLKKVIKKNKWERDEDSLHHGSLFDQYMLWFLLRH
Formulation:	Liquid. Purified antibody supplied in 1x PBS buffer with 0.09% (w/v) sodium azide and 2% sucrose.
Purification:	Affinity Purified
Conjugation:	Unconjugated
Storage:	Store at -20°C as received.
Stability:	Stable for 12 months from date of receipt.
Predicted Protein Size:	71 kDa
Gene Name:	DDB1 and CUL4 associated factor 8-like 2
Database Link:	NP_001130005 Entrez Gene 347442 Human
Background:	The function of this protein remains unknown.
Synonyms:	WDR42C
Note:	Immunogen Sequence Homology: Human: 100%; Dog: 93%; Pig: 93%; Rat: 93%; Horse: 93%; Mouse: 93%; Bovine: 93%; Rabbit: 93%; Guinea pig: 93%; Zebrafish: 90%



[View online »](#)

Product images:



Host: Rabbit; Target Name: DCAF8L2; Sample
Tissue: Jurkat Whole Cell lysates; Antibody
Dilution: 1.0 ug/ml