

## Product datasheet for **TA335895**

### ZAR1L Rabbit Polyclonal Antibody

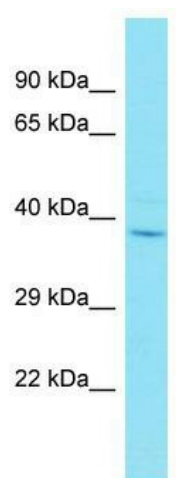
#### Product data:

Product Type:	Primary Antibodies
Applications:	WB
Recommended Dilution:	WB
Reactivity:	Human
Host:	Rabbit
Isotype:	IgG
Clonality:	Polyclonal
Immunogen:	The immunogen for Anti-ZAR1L Antibody is: synthetic peptide directed towards the C-terminal region of Human ZAR1L. Synthetic peptide located within the following region: EPGQLEESGEKDAPCPQETKSKQVPGDAASEPLRRPNFQFLEPKYGYFHC
Formulation:	Liquid. Purified antibody supplied in 1x PBS buffer with 0.09% (w/v) sodium azide and 2% sucrose. <i>Note that this product is shipped as lyophilized powder to China customers.</i>
Purification:	Affinity Purified
Conjugation:	Unconjugated
Storage:	Store at -20°C as received.
Stability:	Stable for 12 months from date of receipt.
Predicted Protein Size:	35 kDa
Gene Name:	zygote arrest 1-like
Database Link:	<a href="#">NP_001130043</a> <a href="#">Entrez Gene 646799 Human</a> <a href="#">A6NP61</a>
Background:	This gene encodes a member of the ZAR1 family that is predominantly expressed in oocytes and early embryos. The protein may function as an RNA regulator in early embryos.
Synonyms:	Z3CXXC7; ZAR2
Note:	Immunogen Sequence Homology: Human: 100%



[View online »](#)

## Product images:



Host: Rabbit; Target Name: ZAR1L; Sample  
Tissue: HT1080 Whole Cell lysates; Antibody  
Dilution: 1.0 ug/ml