

Product datasheet for **TA335892**

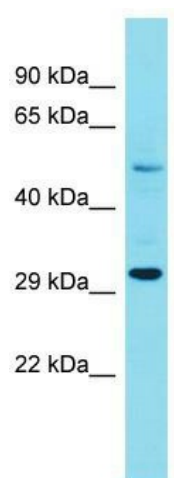
FAM185A Rabbit Polyclonal Antibody

Product data:

Product Type:	Primary Antibodies
Applications:	WB
Recommended Dilution:	WB
Reactivity:	Human
Host:	Rabbit
Isotype:	IgG
Clonality:	Polyclonal
Immunogen:	The immunogen for Anti-FAM185A Antibody is: synthetic peptide directed towards the C-terminal region of Human FAM185A. Synthetic peptide located within the following region: EVHVQEMAEVRKDDVVTVTGLMNQASKREKWIKADAPKGTVSFRRQSWFQ
Formulation:	Liquid. Purified antibody supplied in 1x PBS buffer with 0.09% (w/v) sodium azide and 2% sucrose. <i>Note that this product is shipped as lyophilized powder to China customers.</i>
Purification:	Affinity Purified
Conjugation:	Unconjugated
Storage:	Store at -20°C as received.
Stability:	Stable for 12 months from date of receipt.
Predicted Protein Size:	29 kDa
Gene Name:	family with sequence similarity 185 member A
Database Link:	NP_001138741 Entrez Gene 222234 Human Q8N0U4
Background:	The function of this protein remains unknown.
Synonyms:	MGC35361
Note:	Immunogen Sequence Homology: Human: 100%; Dog: 93%; Pig: 93%; Horse: 93%; Bovine: 86%; Mouse: 75%



[View online »](#)

Product images:

Host: Rabbit; Target Name: FAM185A; Sample
Tissue: 293T Whole Cell lysates; Antibody
Dilution: 1.0 ug/ml