

Product datasheet for **TA335890**

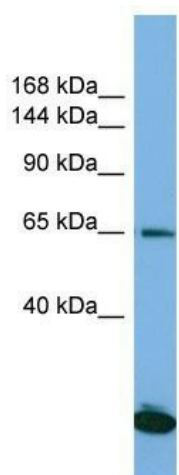
SAP130 Rabbit Polyclonal Antibody

Product data:

Product Type:	Primary Antibodies
Applications:	WB
Recommended Dilution:	WB
Reactivity:	Human
Host:	Rabbit
Isotype:	IgG
Clonality:	Polyclonal
Immunogen:	The immunogen for Anti-SAP130 Antibody is: synthetic peptide directed towards the C-terminal region of Human SAP130. Synthetic peptide located within the following region: ANNLSMPTSDLPPGASPRKKPRKQQHVISTEEGDMMETNSTDDEKSTAKS
Formulation:	Liquid. Purified antibody supplied in 1x PBS buffer with 0.09% (w/v) sodium azide and 2% sucrose. <i>Note that this product is shipped as lyophilized powder to China customers.</i>
Purification:	Affinity Purified
Conjugation:	Unconjugated
Storage:	Store at -20°C as received.
Stability:	Stable for 12 months from date of receipt.
Predicted Protein Size:	67 kDa
Gene Name:	Sin3A associated protein 130kDa
Database Link:	NP_001139400 Entrez Gene 79595 Human Q9H0E3
Background:	SAP130 is a subunit of the histone deacetylase-dependent SIN3A corepressor complex.
Synonyms:	FLJ12761
Note:	Immunogen Sequence Homology: Dog: 100%; Pig: 100%; Rat: 100%; Horse: 100%; Human: 100%; Bovine: 100%; Rabbit: 100%; Mouse: 93%



[View online »](#)

Product images:

Host: Rabbit; Target Name: SAP130; Sample Tissue: Jurkat Whole Cell lysates; Antibody Dilution: 1.0 ug/ml. SAP130 is supported by BioGPS gene expression data to be expressed in Jurkat