

Product datasheet for **TA335889**

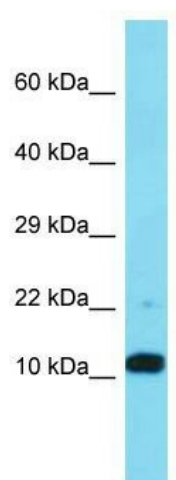
FAM25A Rabbit Polyclonal Antibody

Product data:

Product Type:	Primary Antibodies
Applications:	WB
Recommended Dilution:	WB
Reactivity:	Human
Host:	Rabbit
Isotype:	IgG
Clonality:	Polyclonal
Immunogen:	The immunogen for Anti-FAM25A Antibody is: synthetic peptide directed towards the N-terminal region of Human FAM25A. Synthetic peptide located within the following region: EGAIHAVEEVVKEVVGHAKETGEKAIAEAIKKAQESGDKKMKEITETVTN
Formulation:	Liquid. Purified antibody supplied in 1x PBS buffer with 0.09% (w/v) sodium azide and 2% sucrose. <i>Note that this product is shipped as lyophilized powder to China customers.</i>
Purification:	Affinity Purified
Conjugation:	Unconjugated
Storage:	Store at -20°C as received.
Stability:	Stable for 12 months from date of receipt.
Predicted Protein Size:	9 kDa
Gene Name:	family with sequence similarity 25 member A
Database Link:	NP_001139629 Entrez Gene 643161 Human B3EWG3
Background:	The function of this protein remains unknown.
Synonyms:	bA96C23.5
Note:	Immunogen Sequence Homology: Human: 100%; Rat: 85%; Rabbit: 85%



[View online »](#)

Product images:

Host: Rabbit; Target Name: FAM25A; Sample
Tissue: Jurkat Whole Cell lysates; Antibody
Dilution: 1.0 ug/ml