

## Product datasheet for **TA335888**

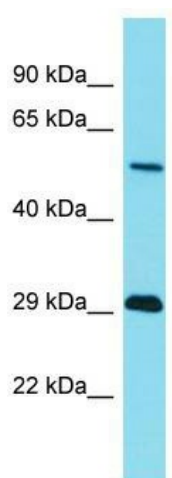
### TRIM43B Rabbit Polyclonal Antibody

#### Product data:

Product Type:	Primary Antibodies
Applications:	WB
Recommended Dilution:	WB
Reactivity:	Human
Host:	Rabbit
Isotype:	IgG
Clonality:	Polyclonal
Immunogen:	The immunogen for Anti-TRIM43B Antibody is: synthetic peptide directed towards the N-terminal region of Human TRIM43B. Synthetic peptide located within the following region: CREPSPKMDFKTNILLKLNVTIARKASLWQFLSSEKQICGTHRQTKKMFC
Formulation:	Liquid. Purified antibody supplied in 1x PBS buffer with 0.09% (w/v) sodium azide and 2% sucrose.
Purification:	Affinity Purified
Conjugation:	Unconjugated
Storage:	Store at -20°C as received.
Stability:	Stable for 12 months from date of receipt.
Predicted Protein Size:	49 kDa
Gene Name:	tripartite motif containing 43B
Database Link:	<a href="#">NP_001157936</a> <a href="#">Entrez Gene 653192 Human</a> <a href="#">A6NCK2</a>
Background:	This gene encodes a member of a family of proteins containing RING-finger, SPRY, and BBC domains. There is no definitive support for transcription of this locus, and the transcript structure is inferred from other family members.
Synonyms:	EG666747; Gm8269
Note:	Immunogen Sequence Homology: Human: 100%
Protein Families:	Druggable Genome


[View online »](#)

## Product images:



Host: Rabbit; Target Name: TRIM43B; Sample  
Tissue: Fetal Heart lysates; Antibody Dilution: 1.0  
ug/ml