

## Product datasheet for **TA335886**

### DCAF17 Rabbit Polyclonal Antibody

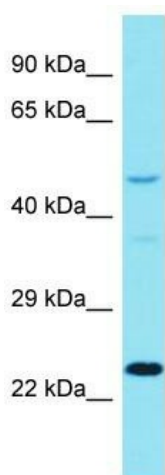
#### Product data:

Product Type:	Primary Antibodies
Applications:	WB
Recommended Dilution:	WB
Reactivity:	Human
Host:	Rabbit
Isotype:	IgG
Clonality:	Polyclonal
Immunogen:	The immunogen for Anti-DCAF17 Antibody is: synthetic peptide directed towards the C-terminal region of Human DCAF17. Synthetic peptide located within the following region: IKITDMPPLLFEVSSLENAFQIGGHPWHYIVTPNKKKQKGVFHICALKDN
Formulation:	Liquid. Purified antibody supplied in 1x PBS buffer with 0.09% (w/v) sodium azide and 2% sucrose. <i>Note that this product is shipped as lyophilized powder to China customers.</i>
Purification:	Affinity Purified
Conjugation:	Unconjugated
Storage:	Store at -20°C as received.
Stability:	Stable for 12 months from date of receipt.
Predicted Protein Size:	49 kDa
Gene Name:	DDB1 and CUL4 associated factor 17
Database Link:	<a href="#">NP_001158293</a> <a href="#">Entrez Gene 80067 Human</a> <a href="#">Q5H9S7</a>
Background:	This gene encodes a nuclear transmembrane protein that associates with cullin 4A/damaged DNA binding protein 1 ubiquitin ligase complex. Mutations in this gene are associated with Woodhouse-Sakati syndrome. Alternate splicing results in multiple transcript variants.
Synonyms:	C2orf37
Note:	Immunogen Sequence Homology: Dog: 100%; Pig: 100%; Rat: 100%; Horse: 100%; Human: 100%; Mouse: 100%; Bovine: 100%; Rabbit: 100%; Guinea pig: 100%



[View online »](#)

## Product images:



Host: Rabbit  
Target Name: DCAF17  
Sample Tissue: PANC1 Cell Lysate  
Antibody Dilution: 1.0 $\mu$ g/ml

Host: Rabbit; Target Name: DCAF17; Sample Tissue: PANC1 Whole Cell lysates; Antibody Dilution: 1.0 ug/ml