

## Product datasheet for **TA335884**

### EFHC1 Rabbit Polyclonal Antibody

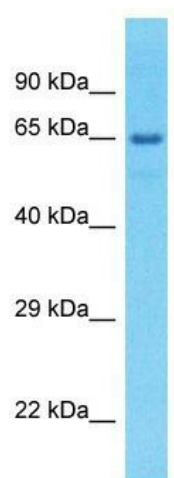
#### Product data:

Product Type:	Primary Antibodies
Applications:	WB
Recommended Dilution:	WB
Reactivity:	Human
Host:	Rabbit
Isotype:	IgG
Clonality:	Polyclonal
Immunogen:	The immunogen for Anti-EFHC1 Antibody is: synthetic peptide directed towards the N-terminal region of Human EFHC1. Synthetic peptide located within the following region: DTVEIREVHERNDGRDPFLLMNRQRPKVLVENAKNFPQCVLEISDQEV
Formulation:	Liquid. Purified antibody supplied in 1x PBS buffer with 0.09% (w/v) sodium azide and 2% sucrose. <i>Note that this product is shipped as lyophilized powder to China customers.</i>
Purification:	Affinity Purified
Conjugation:	Unconjugated
Storage:	Store at -20°C as received.
Stability:	Stable for 12 months from date of receipt.
Predicted Protein Size:	60 kDa
Gene Name:	EF-hand domain containing 1
Database Link:	<a href="#">NP_001165891</a> <a href="#">Entrez Gene 114327 Human</a> <a href="#">Q5JVL4</a>
Background:	The function of this protein remains unknown.
Synonyms:	dj304B14.2; EJM1
Note:	Immunogen Sequence Homology: Pig: 100%; Rat: 100%; Human: 100%; Bovine: 100%; Rabbit: 100%; Guinea pig: 100%; Dog: 93%; Horse: 93%; Mouse: 93%



[View online »](#)

## Product images:



Host: Rabbit; Target Name: EFHC1; Sample  
Tissue: large intestine Tumor lysates; Antibody  
Dilution: 1.0 ug/ml