

Product datasheet for TA335882

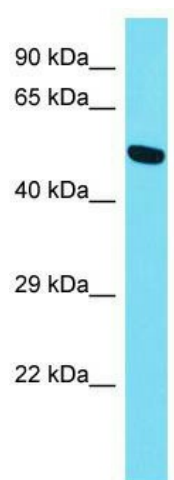
PRSS56 Rabbit Polyclonal Antibody

Product data:

Product Type:	Primary Antibodies
Applications:	WB
Recommended Dilution:	WB
Reactivity:	Human
Host:	Rabbit
Isotype:	IgG
Clonality:	Polyclonal
Immunogen:	The immunogen for Anti-PRSS56 Antibody is: synthetic peptide directed towards the N-terminal region of Human PRSS56. Synthetic peptide located within the following region: PLSFLRLSCRSTRSAPNELLWTVTLAEGSRGEQAEEVPVNRILPHPKFDP
Formulation:	Liquid. Purified antibody supplied in 1x PBS buffer with 0.09% (w/v) sodium azide and 2% sucrose.
Purification:	Affinity Purified
Conjugation:	Unconjugated
Storage:	Store at -20°C as received.
Stability:	Stable for 12 months from date of receipt.
Predicted Protein Size:	57 kDa
Gene Name:	protease, serine 56
Database Link:	NP_001182058 Entrez Gene 646960 Human P0CW18
Background:	This gene encodes a protein that contains a peptidase S1 domain and possesses trypsin-like serine protease activity. The encoded protein may play a role in eye development, and mutations in this gene are a cause of autosomal recessive posterior microphthalmos.
Synonyms:	MCOP6
Note:	Immunogen Sequence Homology: Human: 100%; Dog: 93%; Rabbit: 93%; Pig: 86%; Rat: 85%; Mouse: 85%


[View online »](#)

Product images:



Host: Rabbit; Target Name: PRSS56; Sample
Tissue: HepG2 Whole Cell lysates; Antibody
Dilution: 1.0 ug/ml