

## Product datasheet for **TA335881**

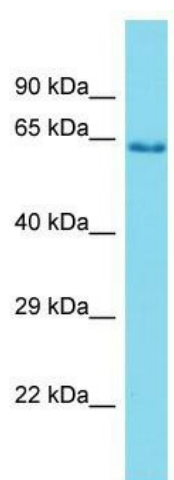
### PRSS56 Rabbit Polyclonal Antibody

#### Product data:

Product Type:	Primary Antibodies
Applications:	WB
Recommended Dilution:	WB
Reactivity:	Human
Host:	Rabbit
Isotype:	IgG
Clonality:	Polyclonal
Immunogen:	The immunogen for Anti-PRSS56 Antibody is: synthetic peptide directed towards the C-terminal region of Human PRSS56. Synthetic peptide located within the following region: SRAAGTRFPKRRPEPRGEANGCPGLEPLRQKLAALQGAHAWILQVPSEHL
Formulation:	Liquid. Purified antibody supplied in 1x PBS buffer with 0.09% (w/v) sodium azide and 2% sucrose. <i>Note that this product is shipped as lyophilized powder to China customers.</i>
Purification:	Affinity Purified
Conjugation:	Unconjugated
Storage:	Store at -20°C as received.
Stability:	Stable for 12 months from date of receipt.
Predicted Protein Size:	63 kDa
Gene Name:	protease, serine 56
Database Link:	<a href="#">NP_001182058</a> <a href="#">Entrez Gene 646960 Human</a> <a href="#">POCW18</a>
Background:	This gene encodes a protein that contains a peptidase S1 domain and possesses trypsin-like serine protease activity. The encoded protein may play a role in eye development, and mutations in this gene are a cause of autosomal recessive posterior microphthalmos.
Synonyms:	MCOP6
Note:	Immunogen Sequence Homology: Human: 100%; Dog: 86%; Pig: 86%; Rabbit: 86%



[View online »](#)

**Product images:**

Host: Rabbit; Target Name: PRSS56; Sample  
Tissue: Fetal Lung lysates; Antibody Dilution: 1.0  
ug/ml