

Product datasheet for **TA335880**

F115A (TCAF1) Rabbit Polyclonal Antibody

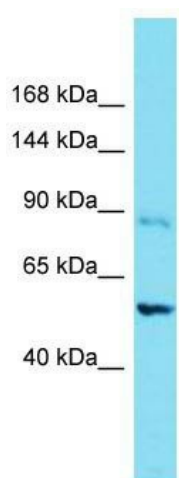
Product data:

Product Type:	Primary Antibodies
Applications:	WB
Recommended Dilution:	WB
Reactivity:	Human
Host:	Rabbit
Isotype:	IgG
Clonality:	Polyclonal
Immunogen:	The immunogen for Anti-FAM115A Antibody is: synthetic peptide directed towards the C-terminal region of Human FAM115A. Synthetic peptide located within the following region: FTEYRNQTNLPTENVDKMNLWVKMFSHQVQKNLAPFFEAWAWPIQKEVAT
Formulation:	Liquid. Purified antibody supplied in 1x PBS buffer with 0.09% (w/v) sodium azide and 2% sucrose. <i>Note that this product is shipped as lyophilized powder to China customers.</i>
Purification:	Affinity Purified
Conjugation:	Unconjugated
Storage:	Store at -20°C as received.
Stability:	Stable for 12 months from date of receipt.
Predicted Protein Size:	56 kDa
Gene Name:	TRPM8 channel associated factor 1
Database Link:	NP_001193870 Entrez Gene 9747 Human Q9Y4C2
Background:	The function of this protein remains unknown.
Synonyms:	FAM115A
Note:	Immunogen Sequence Homology: Human: 100%; Dog: 93%; Pig: 93%; Rat: 93%; Horse: 93%; Bovine: 93%; Rabbit: 93%; Guinea pig: 92%



[View online »](#)

Product images:



Host: Rabbit; Target Name: FAM115A; Sample Tissue: COLO205 Whole Cell lysates; Antibody Dilution: 1.0 ug/ml