

## Product datasheet for **TA335877**

### CHD1 Rabbit Polyclonal Antibody

#### Product data:

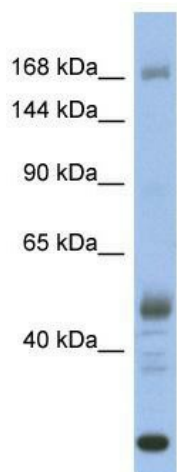
Product Type:	Primary Antibodies
Applications:	WB
Recommended Dilution:	WB
Reactivity:	Human
Host:	Rabbit
Isotype:	IgG
Clonality:	Polyclonal
Immunogen:	The immunogen for Anti-CHD1 Antibody: synthetic peptide directed towards the middle region of human CHD1. Synthetic peptide located within the following region: RRKARAKKNKAMKSIKVKEEIKSDSSPLPSEKSEDEDDDKLSESKSDGRER
Formulation:	Liquid. Purified antibody supplied in 1x PBS buffer with 0.09% (w/v) sodium azide and 2% sucrose. <i>Note that this product is shipped as lyophilized powder to China customers.</i>
Purification:	Affinity Purified
Conjugation:	Unconjugated
Storage:	Store at -20°C as received.
Stability:	Stable for 12 months from date of receipt.
Predicted Protein Size:	197 kDa
Gene Name:	chromodomain helicase DNA binding protein 1
Database Link:	<a href="#">NP_001261</a> <a href="#">Entrez Gene 1105 Human</a> <a href="#">O14646</a>
Background:	The CHD family of proteins is characterized by the presence of chromo (chromatin organization modifier) domains and SNF2-related helicase/ATPase domains. CHD genes alter gene expression possibly by modification of chromatin structure thus altering access
Synonyms:	DKFZp686E2337
Note:	Immunogen Sequence Homology: Horse: 100%; Human: 100%; Dog: 93%; Pig: 93%; Guinea pig: 93%; Rabbit: 86%; Mouse: 85%



[View online »](#)

Protein Families: Druggable Genome

### Product images:



WB Suggested Anti-CHD1 Antibody Titration: 0.2-1 ug/ml; ELISA Titer: 1:62500; Positive Control: Human Stomach