

## Product datasheet for **TA335875**

### CHD4 Rabbit Polyclonal Antibody

#### Product data:

Product Type:	Primary Antibodies
Applications:	WB
Recommended Dilution:	WB
Reactivity:	Human
Host:	Rabbit
Isotype:	IgG
Clonality:	Polyclonal
Immunogen:	The immunogen for Anti-CHD4 Antibody: synthetic peptide directed towards the N terminal of human CHD4. Synthetic peptide located within the following region: QKKERMLLCRQLGDSSGEGPEFVEEEEEVALRSDSEGSDYTPGKKKKKKL
Formulation:	Liquid. Purified antibody supplied in 1x PBS buffer with 0.09% (w/v) sodium azide and 2% sucrose. <i>Note that this product is shipped as lyophilized powder to China customers.</i>
Purification:	Affinity Purified
Conjugation:	Unconjugated
Storage:	Store at -20°C as received.
Stability:	Stable for 12 months from date of receipt.
Predicted Protein Size:	218 kDa
Gene Name:	chromodomain helicase DNA binding protein 4
Database Link:	<a href="#">NP_001264</a> <a href="#">Entrez Gene 1108 Human</a> <a href="#">Q14839</a>
Background:	CHD4 is a probable transcription regulator. The product of this gene belongs to the SNF2/RAD54 helicase family. It represents the main component of the nucleosome remodeling and deacetylase complex and plays an important role in epigenetic transcriptional repression. Patients with dermatomyositis develop antibodies against this protein. Publication Note: This RefSeq record includes a subset of the publications that are available for this gene. Please see the Entrez Gene record to access additional publications.



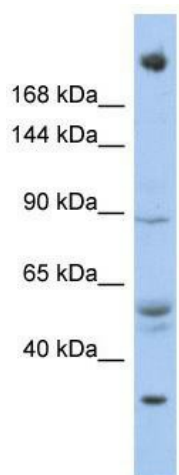
[View online »](#)

**Synonyms:** CHD-4; Mi-2b; Mi2-BETA

**Note:** Immunogen Sequence Homology: Dog: 100%; Pig: 100%; Rat: 100%; Horse: 100%; Human: 100%; Mouse: 100%; Bovine: 100%; Rabbit: 100%; Guinea pig: 100%; Zebrafish: 93%

**Protein Families:** Druggable Genome, Transcription Factors

**Product images:**



WB Suggested Anti-CHD4 Antibody Titration: 0.2-1 ug/ml; ELISA Titer: 1:12500; Positive Control: OVCAR-3 cell lysate. There is BioGPS gene expression data showing that CHD4 is expressed in OVCAR3.