

## Product datasheet for **TA335874**

### Choline kinase alpha (CHKA) Rabbit Polyclonal Antibody

#### Product data:

Product Type:	Primary Antibodies
Applications:	WB
Recommended Dilution:	WB
Reactivity:	Human
Host:	Rabbit
Isotype:	IgG
Clonality:	Polyclonal
Immunogen:	The immunogen for Anti-CHKA Antibody: synthetic peptide directed towards the middle region of human CHKA. Synthetic peptide located within the following region: LESVMFAILAERSLGPPLYGIFPQGRLEQFIPSRRLDTEELSLPDISAEI
Formulation:	Liquid. Purified antibody supplied in 1x PBS buffer with 0.09% (w/v) sodium azide and 2% sucrose. <i>Note that this product is shipped as lyophilized powder to China customers.</i>
Purification:	Affinity Purified
Conjugation:	Unconjugated
Storage:	Store at -20°C as received.
Stability:	Stable for 12 months from date of receipt.
Predicted Protein Size:	50 kDa
Gene Name:	choline kinase alpha
Database Link:	<a href="#">NP_001268</a> <a href="#">Entrez Gene 1119 Human</a> <a href="#">P35790</a>



[View online »](#)

**Background:**

The major pathway for the biosynthesis of phosphatidylcholine occurs via the CDP-choline pathway. CHKA is the initial enzyme in the sequence and may play a regulatory role. It also catalyzes the phosphorylation of ethanolamine. The major pathway for the biosynthesis of phosphatidylcholine occurs via the CDP-choline pathway. The protein encoded by this gene is the initial enzyme in the sequence and may play a regulatory role. The encoded protein also catalyzes the phosphorylation of ethanolamine. Two transcript variants encoding different isoforms have been found for this gene.

**Synonyms:**

CHK; CK; CKI; EK

**Note:**

Immunogen Sequence Homology: Dog: 100%; Rat: 100%; Human: 100%; Mouse: 100%; Bovine: 100%; Rabbit: 100%; Pig: 93%; Horse: 93%; Guinea pig: 93%

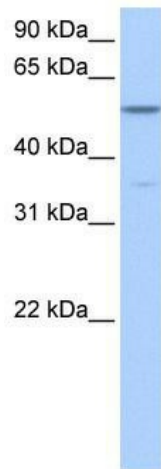
**Protein Families:**

Druggable Genome

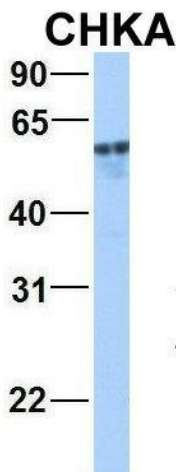
**Protein Pathways:**

Glycerophospholipid metabolism, Metabolic pathways

**Product images:**



WB Suggested Anti-CHKA Antibody Titration: 0.2-1 ug/ml; Positive Control: Human Liver



Rabbit Anti-CHKA  
Sample Type: Human Adult Placenta  
Antibody Concentration: 1ug/mL

2Hum. Adult Placenta; Host: Rabbit; Target Name: CHAD; Sample Tissue: Human Adult Placenta; Antibody Dilution: 1.0 ug/ml