

## Product datasheet for **TA335872**

### Carboxypeptidase D (CPD) Rabbit Polyclonal Antibody

#### Product data:

Product Type:	Primary Antibodies
Applications:	WB
Recommended Dilution:	WB
Reactivity:	Human
Host:	Rabbit
Isotype:	IgG
Clonality:	Polyclonal
Immunogen:	The immunogen for Anti-CPD Antibody: synthetic peptide directed towards the N terminal of human CPD. Synthetic peptide located within the following region: SLNPDGFERAREGDCGFGDGGPSGASGRDNSRGRDLNRSFPDQFSTGPEP
Formulation:	Liquid. Purified antibody supplied in 1x PBS buffer with 0.09% (w/v) sodium azide and 2% sucrose. <i>Note that this product is shipped as lyophilized powder to China customers.</i>
Purification:	Affinity Purified
Conjugation:	Unconjugated
Storage:	Store at -20°C as received.
Stability:	Stable for 12 months from date of receipt.
Predicted Protein Size:	152 kDa
Gene Name:	carboxypeptidase D
Database Link:	<a href="#">NP_001295</a> <a href="#">Entrez Gene 1362 Human</a> <a href="#">O75976</a>



[View online »](#)

**Background:**

The metallo-carboxypeptidase family of enzymes is divided into 2 subfamilies based on sequence similarities. The pancreatic carboxypeptidase-like and the regulatory B-type carboxypeptidase subfamilies. Carboxypeptidase D (CPD) has been identified as a regulatory B-type carboxypeptidase. CPD is a homolog of duck gp180, a hepatitis B virus-binding protein. The metallo-carboxypeptidase family of enzymes is divided into 2 subfamilies based on sequence similarities. The pancreatic carboxypeptidase-like and the regulatory B-type carboxypeptidase subfamilies. Carboxypeptidase D has been identified as a regulatory B-type carboxypeptidase. CPD is a homolog of duck gp180, a hepatitis B virus-binding protein. Transcript variants utilizing alternative polyadenylation signals exist for this gene. Publication Note: This RefSeq record includes a subset of the publications that are available for this gene. Please see the Entrez Gene record to access additional publications.

**Synonyms:**

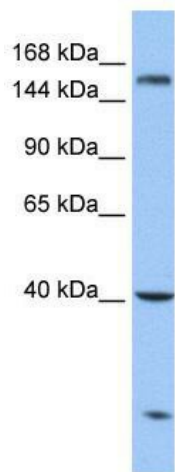
GP180

**Note:**

Immunogen Sequence Homology: Human: 100%; Horse: 93%; Rabbit: 93%; Dog: 86%; Pig: 86%; Rat: 79%; Mouse: 79%

**Protein Families:**

Druggable Genome, Protease, Transmembrane

**Product images:**

WB Suggested Anti-CPD Antibody Titration: 0.2-1 ug/ml; Positive Control: Hela cell lysate