

Product datasheet for **TA335870**

CRIP2 Rabbit Polyclonal Antibody

Product data:

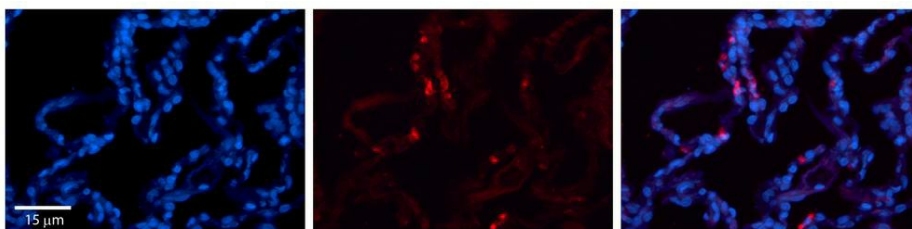
| | |
|-------------------------|--|
| Product Type: | Primary Antibodies |
| Applications: | IHC, WB |
| Recommended Dilution: | WB, IHC |
| Reactivity: | Human |
| Host: | Rabbit |
| Isotype: | IgG |
| Clonality: | Polyclonal |
| Immunogen: | The immunogen for Anti-CRIP2 Antibody: synthetic peptide directed towards the middle region of human CRIP2. Synthetic peptide located within the following region: TLTPGGHAEHDGQPYCHKPCYGILFGPKGVNTGAVGSYIYDRDPEGKVQP |
| Formulation: | Liquid. Purified antibody supplied in 1x PBS buffer with 0.09% (w/v) sodium azide and 2% sucrose. <i>Note that this product is shipped as lyophilized powder to China customers.</i> |
| Purification: | Affinity Purified |
| Conjugation: | Unconjugated |
| Storage: | Store at -20°C as received. |
| Stability: | Stable for 12 months from date of receipt. |
| Predicted Protein Size: | 22 kDa |
| Gene Name: | cysteine rich protein 2 |
| Database Link: | NP_001303 Entrez Gene 1397 Human P52943 |
| Background: | The exact function of CRIP2 remains unknown. |
| Synonyms: | CRIP; CRP2; ESP1 |
| Note: | Immunogen Sequence Homology: Dog: 100%; Pig: 100%; Rat: 100%; Human: 100%; Mouse: 100%; Bovine: 100%; Guinea pig: 100%; Zebrafish: 93%; Horse: 79% |



[View online »](#)

Product images:

WB Suggested Anti-CRIP2 Antibody Titration: 0.2-1 ug/ml; ELISA Titer: 1:312500; Positive Control: MCF7 cell lysate. CRIP2 is supported by BioGPS gene expression data to be expressed in MCF7



Rabbit Anti-CRIP2 Antibody; Formalin Fixed Paraffin Embedded Tissue: Human Lung Tissue; Observed Staining: Cytoplasmic in alveolar type I cells; Primary Antibody Concentration: 1:100; Other Working Concentrations: 1/600; Secondary Antibody: Donkey anti-Rabbit-Cy3; Secondary Antibody Concentration: 1:200; Magnification: 20X; Exposure Time: 0.5-2.0 sec;