

Product datasheet for **TA335869**

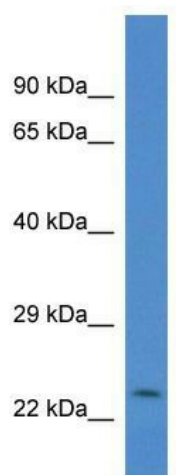
CSRP2 Rabbit Polyclonal Antibody

Product data:

Product Type:	Primary Antibodies
Applications:	WB
Recommended Dilution:	WB
Reactivity:	Mouse
Host:	Rabbit
Isotype:	IgG
Clonality:	Polyclonal
Immunogen:	The immunogen for Anti-Csrp2 Antibody: synthetic peptide corresponding to a region of Mouse. Synthetic peptide located within the following region: IKPESAPHRPTTNPNTSKFAQKYGGAEKCSRCDGSDSVYAAEKIIGAGKPW
Formulation:	Liquid. Purified antibody supplied in 1x PBS buffer with 0.09% (w/v) sodium azide and 2% sucrose. <i>Note that this product is shipped as lyophilized powder to China customers.</i>
Purification:	Affinity Purified
Conjugation:	Unconjugated
Storage:	Store at -20°C as received.
Stability:	Stable for 12 months from date of receipt.
Predicted Protein Size:	21 kDa
Gene Name:	cysteine and glycine rich protein 2
Database Link:	NP_001312 Entrez Gene 13008 Mouse Q16527
Background:	Csrp2 is drastically down-regulated in response to PDGF-BB or cell injury, that promote smooth muscle cell proliferation and dedifferentiation. It seems to play a role in the development of the embryonic vascular system.
Synonyms:	CRP2; LMO5; SmLIM
Note:	Immunogen Sequence Homology: Pig: 100%; Rat: 100%; Horse: 100%; Human: 100%; Bovine: 100%; Rabbit: 100%; Guinea pig: 100%; Mouse: 93%; Dog: 86%



[View online »](#)

Product images:

WB Suggested Anti-Csrp2 Antibody; Titration: 1.0 ug/ml; Positive Control: Mouse Pancreas