

## Product datasheet for **TA335868**

### CYLC2 Rabbit Polyclonal Antibody

#### Product data:

Product Type:	Primary Antibodies
Applications:	WB
Recommended Dilution:	WB
Reactivity:	Human
Host:	Rabbit
Isotype:	IgG
Clonality:	Polyclonal
Immunogen:	The immunogen for Anti-CYLC2 Antibody: synthetic peptide directed towards the C terminal of human CYLC2. Synthetic peptide located within the following region: DAKKVAKKDTEKESADSKKDAKKNAKKDAKKDAKKNAKKDEKKDAKKKGK
Formulation:	Liquid. Purified antibody supplied in 1x PBS buffer with 0.09% (w/v) sodium azide and 2% sucrose. <i>Note that this product is shipped as lyophilized powder to China customers.</i>
Purification:	Affinity Purified
Conjugation:	Unconjugated
Storage:	Store at -20°C as received.
Stability:	Stable for 12 months from date of receipt.
Predicted Protein Size:	38 kDa
Gene Name:	cylicin 2
Database Link:	<a href="#">NP_001331</a> <a href="#">Entrez Gene 1539 Human</a> <a href="#">Q14093</a>
Background:	Cylicin II (CYCL2) is specifically expressed in testis and is part of the cytoskeletal calyx of mammalian sperm heads. Cylicin II may play a role in the morphogenesis of the sperm head. Cylicin II (CYCL2) is specifically expressed in testis and is part of the cytoskeletal calyx of mammalian sperm heads. Cylicin II may play a role in the morphogenesis of the sperm head. PRIMARYREFSEQ_SPAN PRIMARY_IDENTIFIER PRIMARY_SPAN COMP 1-1440 Z46788.1 1-1440 1441-1622 AL449304.19 15467-15648 1623-2119 Z46788.1 1620-2116

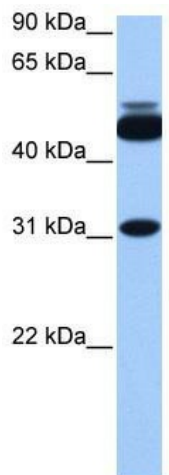


[View online »](#)

**Synonyms:** MGC129591

**Note:** Immunogen Sequence Homology: Human: 100%; Pig: 86%; Bovine: 86%; Rabbit: 80%; Dog: 79%; Rat: 79%; Yeast: 79%; Guinea pig: 79%; Horse: 77%; Zebrafish: 77%

**Product images:**



WB Suggested Anti-CYLC2 Antibody Titration: 0.2-1 ug/ml; Positive Control: 721\_B cell lysate