

## Product datasheet for **TA335867**

### Non Neuronal Enolase (ENO1) Rabbit Polyclonal Antibody

#### Product data:

Product Type:	Primary Antibodies
Applications:	IHC, WB
Recommended Dilution:	WB, IHC
Reactivity:	Human
Host:	Rabbit
Isotype:	IgG
Clonality:	Polyclonal
Immunogen:	The immunogen for Anti-ENO1 Antibody: synthetic peptide directed towards the middle region of human ENO1. Synthetic peptide located within the following region: VAASEFFRSGKYDLDFKSPDDPSRYISPDQLADLYKSFYKDYVPWSIEDP
Formulation:	Liquid. Purified antibody supplied in 1x PBS buffer with 0.09% (w/v) sodium azide and 2% sucrose. <i>Note that this product is shipped as lyophilized powder to China customers.</i>
Purification:	Affinity Purified
Conjugation:	Unconjugated
Storage:	Store at -20°C as received.
Stability:	Stable for 12 months from date of receipt.
Predicted Protein Size:	47 kDa
Gene Name:	enolase 1
Database Link:	<a href="#">NP_001419</a> <a href="#">Entrez Gene 2023 Human P06733</a>



[View online »](#)

**Background:** ENO1 encodes one of three enolase isoenzymes found in mammals; it encodes alpha-enolase, a homodimeric soluble enzyme, and also encodes a shorter monomeric structural lens protein, tau-crystallin. The two proteins are made from the same message. The full length protein, the isoenzyme, is found in the cytoplasm. The shorter protein is produced from an alternative translation start, is localized to the nucleus, and has been found to bind to an element in the c-myc promoter. A pseudogene has been identified that is located on the other arm of the same chromosome.

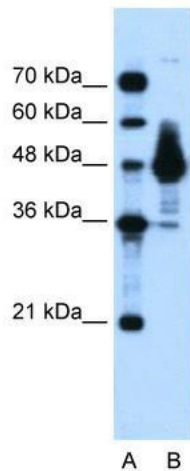
**Synonyms:** ENO1L1; MPB1; NNE; PPH

**Note:** Immunogen Sequence Homology: Pig: 100%; Rat: 100%; Human: 100%; Dog: 93%; Mouse: 93%; Rabbit: 93%; Zebrafish: 93%; Guinea pig: 93%; Horse: 79%; Bovine: 79%

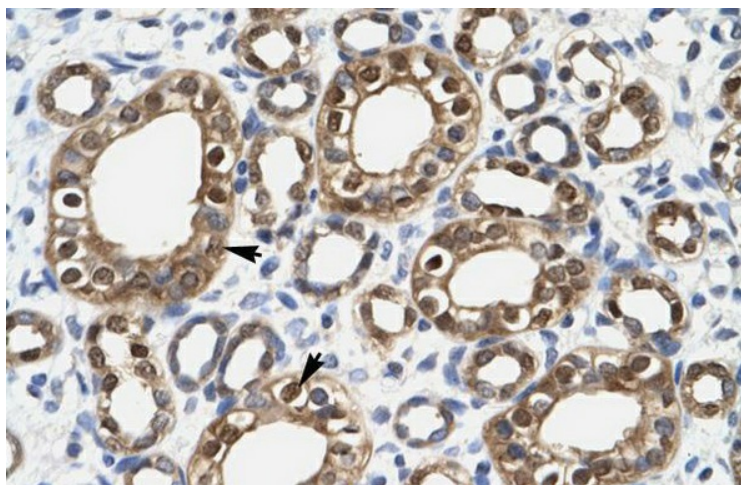
**Protein Families:** Druggable Genome, Transcription Factors

**Protein Pathways:** Glycolysis / Gluconeogenesis, Metabolic pathways, RNA degradation

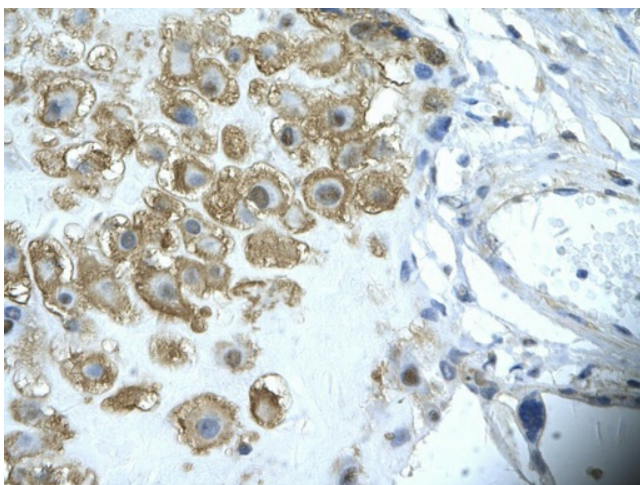
### Product images:



WB Suggested Anti-ENO1 Antibody Titration: 0.03 ug/ml; ELISA Titer: 1:1562500; Positive Control: Human Small Intestine



Human kidney



Rabbit Anti-ENO1 Antibody; Paraffin Embedded  
Tissue: Human placenta cell; Cellular Data:  
Epithelial cells of renal tubule; Antibody  
Concentration: 4.0-8.0 ug/ml; Magnification: 400X