

## Product datasheet for **TA335862**

### Aquaporin 5 (AQP5) Rabbit Polyclonal Antibody

#### Product data:

Product Type:	Primary Antibodies
Applications:	WB
Recommended Dilution:	WB
Reactivity:	Human
Host:	Rabbit
Isotype:	IgG
Clonality:	Polyclonal
Immunogen:	The immunogen for Anti-AQP5 Antibody is: synthetic peptide directed towards the C-terminal region of Human AQP5. Synthetic peptide located within the following region: RFSPAHWVFWGPIVGAVLAAILYFYLLFPNSLSLSEVAIIKGTYPDE
Formulation:	Liquid. Purified antibody supplied in 1x PBS buffer with 0.09% (w/v) sodium azide and 2% sucrose. <i>Note that this product is shipped as lyophilized powder to China customers.</i>
Purification:	Affinity Purified
Conjugation:	Unconjugated
Storage:	Store at -20°C as received.
Stability:	Stable for 12 months from date of receipt.
Predicted Protein Size:	28 kDa
Gene Name:	aquaporin 5
Database Link:	<a href="#">NP_001642</a> <a href="#">Entrez Gene 362 Human</a> <a href="#">P55064</a>
Background:	Aquaporin 5 (AQP5) is a water channel protein. Aquaporins are a family of small integral membrane proteins related to the major intrinsic protein (MIP or AQP0). Aquaporin 5 plays a role in the generation of saliva, tears and pulmonary secretions. AQP0, AQP2, AQP5, and AQP6 are closely related and all map to 12q13.
Synonyms:	AQP-5; PPKB

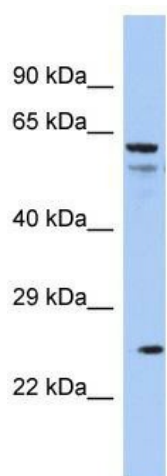


[View online »](#)

**Note:** Immunogen Sequence Homology: Human: 100%; Rat: 86%; Horse: 86%; Sheep: 86%; Dog: 79%; Pig: 79%; Bovine: 79%; Guinea pig: 79%

**Protein Families:** Druggable Genome, Transmembrane

**Product images:**



Host: Rabbit; Target Name: AQP5; Sample Tissue: COLO205 Whole cell lysates; Antibody Dilution: 1.0 ug/ml. AQP5 is supported by BioGPS gene expression data to be expressed in COLO205