

Product datasheet for **TA335861**

CSNK2A2 Rabbit Polyclonal Antibody

Product data:

Product Type:	Primary Antibodies
Applications:	WB
Recommended Dilution:	WB
Reactivity:	Human
Host:	Rabbit
Isotype:	IgG
Clonality:	Polyclonal
Immunogen:	The immunogen for Anti-CSNK2A2 Antibody: synthetic peptide directed towards the C terminal of human CSNK2A2. Synthetic peptide located within the following region: LLDKLLRYDHQRLTAKEAMEHPYFYPVVKESQPCADNAVLSSGLTAAR
Formulation:	Liquid. Purified antibody supplied in 1x PBS buffer with 0.09% (w/v) sodium azide and 2% sucrose. <i>Note that this product is shipped as lyophilized powder to China customers.</i>
Purification:	Affinity Purified
Conjugation:	Unconjugated
Storage:	Store at -20°C as received.
Stability:	Stable for 12 months from date of receipt.
Predicted Protein Size:	39 kDa
Gene Name:	casein kinase 2 alpha 2
Database Link:	NP_001887 Entrez Gene 1459 Human P19784
Background:	CSNK2A2 belongs to the protein kinase superfamily, Ser/Thr protein kinase family, CK2 subfamily. It contains 1 protein kinase domain. Casein kinases are operationally defined by their preferential utilization of acidic proteins such as caseins as substrates. The alpha and alpha' chains contain the catalytic site. CSNK2A2 participates in Wnt signaling. It phosphorylates 'Ser-392' of p53/TP53 following UV irradiation.
Synonyms:	CK2A2; CK2alpha; CK2alpha'; CSNK2A1



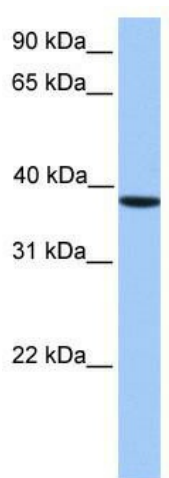
[View online »](#)

Note: Immunogen Sequence Homology: Dog: 100%; Pig: 100%; Horse: 100%; Human: 100%; Bovine: 100%; Rabbit: 100%; Guinea pig: 93%; Yeast: 92%; Rat: 86%; Mouse: 86%

Protein Families: Druggable Genome, Protein Kinase

Protein Pathways: Adherens junction, Tight junction, Wnt signaling pathway

Product images:



WB Suggested Anti-CSNK2A2 Antibody Titration: 0.2-1 ug/ml; Positive Control: HepG2 cell lysate. CSNK2A2 is supported by BioGPS gene expression data to be expressed in HepG2