

## Product datasheet for **TA335859**

### DLX4 Rabbit Polyclonal Antibody

#### Product data:

Product Type:	Primary Antibodies
Applications:	WB
Recommended Dilution:	WB
Reactivity:	Human
Host:	Rabbit
Isotype:	IgG
Clonality:	Polyclonal
Immunogen:	The immunogen for Anti-DLX4 Antibody: synthetic peptide directed towards the N terminal of human DLX4. Synthetic peptide located within the following region: PQAPAKLRKRPRTIYSSLQLQHNLNRFQHTQYLALPERAQLAAQLGLTQT
Formulation:	Liquid. Purified antibody supplied in 1x PBS buffer with 0.09% (w/v) sodium azide and 2% sucrose. <i>Note that this product is shipped as lyophilized powder to China customers.</i>
Purification:	Affinity Purified
Conjugation:	Unconjugated
Storage:	Store at -20°C as received.
Stability:	Stable for 12 months from date of receipt.
Predicted Protein Size:	26 kDa
Gene Name:	distal-less homeobox 4
Database Link:	<a href="#">NP_001925</a> <a href="#">Entrez Gene 1748 Human</a> <a href="#">Q92988</a>



[View online »](#)

**Background:**

DLX4 is a member of the family of Dlx genes that are involved in early vertebrate morphogenesis, notably of the head. Western blots using several different antibodies against different unique regions of this protein target confirm the same apparent molecular weight in our tests. Many vertebrate homeo box-containing genes have been identified on the basis of their sequence similarity with Drosophila developmental genes. Members of the Dlx gene family contain a homeobox that is related to that of Distal-less (Dll), a gene expressed in the head and limbs of the developing fruit fly. The Distal-less (Dlx) family of genes comprises at least 6 different members, DLX1-DLX6. The DLX proteins are postulated to play a role in forebrain and craniofacial development. Three transcript variants have been described for this gene, however, the full length nature of one variant has not been described. Studies of the two splice variants revealed that one encoded isoform functions as a repressor of the beta-globin gene while the other isoform lacks that function.

**Synonyms:**

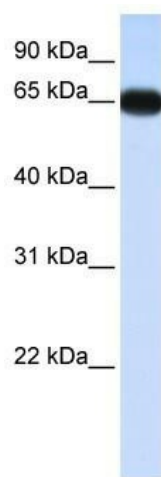
BP1; DLX7; DLX8; DLX9; OFC15

**Note:**

Immunogen Sequence Homology: Dog: 100%; Pig: 100%; Rat: 100%; Human: 100%; Mouse: 100%; Bovine: 100%; Rabbit: 100%; Horse: 93%; Zebrafish: 93%; Guinea pig: 93%

**Protein Families:**

Transcription Factors

**Product images:**

WB Suggested Anti-DLX4 Antibody Titration: 0.2-1 ug/ml; ELISA Titer: 1:12500; Positive Control: Human Lung