

## Product datasheet for **TA335855**

### ELK4 Rabbit Polyclonal Antibody

#### Product data:

Product Type:	Primary Antibodies
Applications:	WB
Recommended Dilution:	WB
Reactivity:	Human
Host:	Rabbit
Isotype:	IgG
Clonality:	Polyclonal
Immunogen:	The immunogen for Anti-ELK4 Antibody: synthetic peptide directed towards the C terminal of human ELK4. Synthetic peptide located within the following region: PVAPLSPARLQGANTLFQFPSVLNSHGPFSLGSLDGPSTPGPFSPDLQKT
Formulation:	Liquid. Purified antibody supplied in 1x PBS buffer with 0.09% (w/v) sodium azide and 2% sucrose. <i>Note that this product is shipped as lyophilized powder to China customers.</i>
Purification:	Protein A purified
Conjugation:	Unconjugated
Storage:	Store at -20°C as received.
Stability:	Stable for 12 months from date of receipt.
Predicted Protein Size:	47 kDa
Gene Name:	ELK4, ETS transcription factor
Database Link:	<a href="#">NP_001964</a> <a href="#">Entrez Gene 2005 Human P28324</a>
Background:	The ELK4 gene is a member of the Ets family of transcription factors and of the ternary complex factor (TCF) subfamily. Proteins of the TCF subfamily form a ternary complex by binding to the the serum response factor and the serum response element in the promoter of the c-fos proto-oncogene. The protein encoded by ELK4 is phosphorylated by the kinases, MAPK1 and MAPK8.
Synonyms:	SAP1



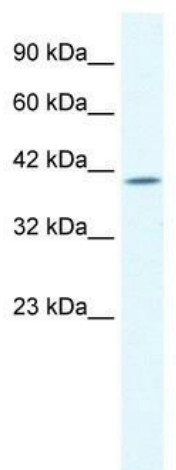
[View online »](#)

**Note:** Immunogen Sequence Homology: Pig: 100%; Rat: 100%; Horse: 100%; Human: 100%; Mouse: 100%; Bovine: 100%; Dog: 93%; Rabbit: 93%; Guinea pig: 93%

**Protein Families:** Druggable Genome, Transcription Factors

**Protein Pathways:** MAPK signaling pathway

### Product images:



WB Suggested Anti-ELK4 Antibody Titration: 2.5 ug/ml; ELISA Titer: 1:62500; Positive Control: Jurkat cell lysate