

Product datasheet for **TA335854**

EZH1 Rabbit Polyclonal Antibody

Product data:

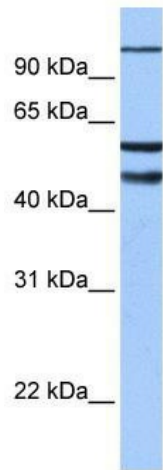
Product Type:	Primary Antibodies
Applications:	WB
Recommended Dilution:	WB, assay
Reactivity:	Human
Host:	Rabbit
Isotype:	IgG
Clonality:	Polyclonal
Immunogen:	The immunogen for Anti-EZH1 Antibody: synthetic peptide directed towards the N terminal of human EZH1. Synthetic peptide located within the following region: VDALNQYSDEEEGHNDTSDGKQDDSKEDLPVTRKRKRHAIEGNKKSSKK
Formulation:	Liquid. Purified antibody supplied in 1x PBS buffer with 0.09% (w/v) sodium azide and 2% sucrose. <i>Note that this product is shipped as lyophilized powder to China customers.</i>
Purification:	Affinity Purified
Conjugation:	Unconjugated
Storage:	Store at -20°C as received.
Stability:	Stable for 12 months from date of receipt.
Predicted Protein Size:	85 kDa
Gene Name:	enhancer of zeste 1 polycomb repressive complex 2 subunit
Database Link:	NP_001982 Entrez Gene 2145 Human Q92800
Background:	EZH1 is a component of a noncanonical Polycomb repressive complex-2 (PRC2) that mediates methylation of histone H3 (see MIM 602812) lys27 (H3K27) and functions in the maintenance of embryonic stem cell pluripotency and plasticity.
Synonyms:	KMT6B
Note:	Immunogen Sequence Homology: Pig: 100%; Rat: 100%; Horse: 100%; Human: 100%; Guinea pig: 100%; Dog: 92%; Bovine: 92%; Rabbit: 92%; Mouse: 85%



[View online »](#)

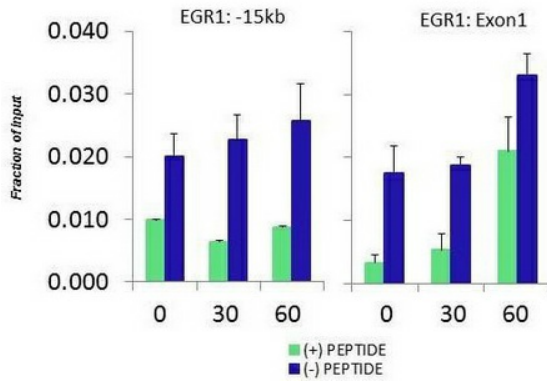
Protein Families: Druggable Genome, Transcription Factors

Product images:



WB Suggested Anti-EZH1 Antibody Titration: 0.2-1 ug/ml; ELISA Titer: 1:312500; Positive Control: Human brain

**HCT116 serum response
EZH1
Matrix-ChIP**



Quiescent human colon carcinoma HCT116 cultures were treated with 10% FBS for three time points (0, 15, 30min) or (0, 30, 60min) were used in Matrix-ChIP and real-time PCR assays at EGR1 gene (Exon1) and 15kb upstream site.