

Product datasheet for **TA335853**

AFF2 Rabbit Polyclonal Antibody

Product data:

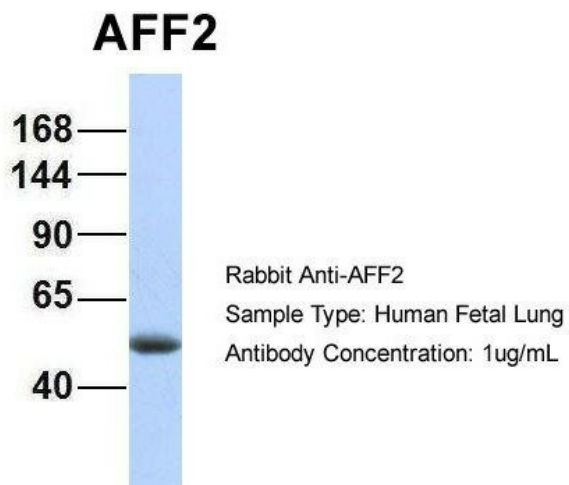
Product Type:	Primary Antibodies
Applications:	WB
Recommended Dilution:	WB
Reactivity:	Human
Host:	Rabbit
Isotype:	IgG
Clonality:	Polyclonal
Immunogen:	The immunogen for Anti-AFF2 Antibody: synthetic peptide directed towards the N terminal of human AFF2. Synthetic peptide located within the following region: MDLFDFFRDWDLEQQCHYEQDRSALKKREWERRNQEVEQEDDLFSSGFDL
Formulation:	Liquid. Purified antibody supplied in 1x PBS buffer with 0.09% (w/v) sodium azide and 2% sucrose. <i>Note that this product is shipped as lyophilized powder to China customers.</i>
Purification:	Affinity Purified
Conjugation:	Unconjugated
Storage:	Store at -20°C as received.
Stability:	Stable for 12 months from date of receipt.
Predicted Protein Size:	145 kDa
Gene Name:	AF4/FMR2 family member 2
Database Link:	NP_002016 Entrez Gene 2334 Human P51816
Background:	AFF2 belongs to the AF4 family. Defects in AFF2 are the cause of FRAXE. The exact function of AFF2 remains unknown.
Synonyms:	FMR2; FMR2P; FRAXE; MRX2; OX19
Note:	Immunogen Sequence Homology: Dog: 100%; Pig: 100%; Rat: 100%; Horse: 100%; Human: 100%; Bovine: 100%; Rabbit: 100%; Mouse: 93%; Guinea pig: 93%; Zebrafish: 77%



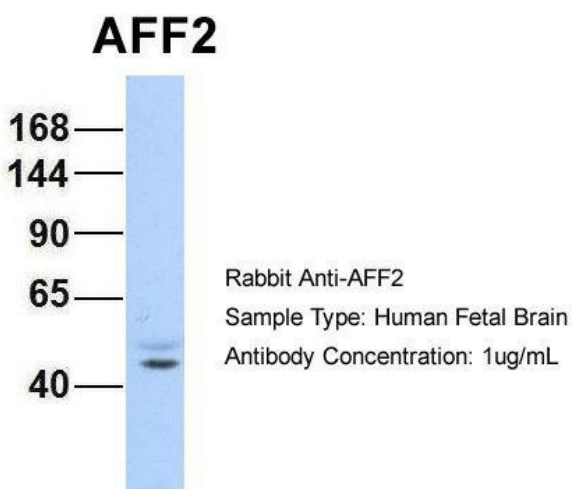
[View online »](#)

Protein Families: Druggable Genome

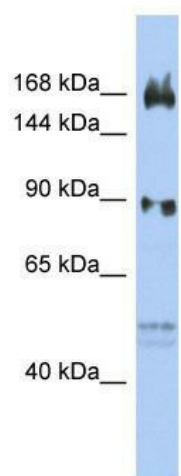
Product images:



Host: Rabbit; Target Name: AFF2; Sample Tissue: Human Fetal Lung; Antibody Dilution: 1.0 ug/ml



Host: Rabbit; Target Name: AFF2; Sample Tissue: Human Fetal Brain; Antibody Dilution: 1.0 ug/ml



WB Suggested Anti-AFF2 Antibody Titration: 0.2-1 ug/ml; ELISA Titer: 1:62500; Positive Control: OVCAR-3 cell lysate; AFF2 is strongly supported by BioGPS gene expression data to be expressed in Human OVCAR3 cells